



<https://ajnoffthecharts.com/tag/lillian-wald/>

# School Nurse UPDATE

#8 MARCH 21, 2024

## FEATURED STORIES

[PRACTICE POINTS –RN  
Action Agendas Support  
School Nurses’ Data Sharing](#)

[Supporting LGBTQ+ Youth  
\(p.4-5\)](#)

[Endometriosis Resources  
\(p.7\)](#)

[Poison Prevention \(p.12\)](#)

## SAVE THE DATES

DPI Consultant Office hours  
4/9/24 2-2:45 PM  
4/19/24 9-9:45 AM

School Health Services  
Survey Q&A Zoom Meeting  
4/5/24

WASN Annual Conference  
April 29- May 1, 2024.  
Registration now open.

Professional Risk  
Management- Licensure and  
Malpractice Issues Webinar  
5/7/2024 4-5 PM

School Nurse Summer  
Institute 8/5/2024

New School Nurse  
Orientation October 10-11,  
2024 Stevens Point

Greetings!

Thank you to all the school nurses and others who have sent me wishes of congratulations after NASN’s announcement that I have been selected to become a Fellow in the National Academy of School Nursing. This is a great honor! To be recognized by peers as having expertise in the area I am so passionate about is indeed rewarding yet humbling. I hope there are many Wisconsin school nurses attending the NASN conference this year so we can celebrate together. Besides offering free registration to this year’s state conference, the **Wisconsin Association of School Nurses will be providing several free NASN conference registrations.**

There are multiple attachments to this Update to support your work. Make sure you look at them. One is a reminder of the **Health Care Transition Echo that started this month.** Another, shares **updates from my Student Services/ Prevention and Wellness (SSPW) Team.**

During the February Diabetes in School Health (DiSH) session information was shared regarding **summer camp nurse opportunities.** Attached to this newsletter are several flyers related to Camp Nurse positions .

Several **resources were added to the DPI school nursing webpages** the past few weeks (DPI News). I will be hosting a **webinar May 7<sup>th</sup> to provide information to WI school nurses on professional risk management.** The webinar will be conducted by a nurse risk management specialist from Nursing Services Organization. Watch for more information via email.

An additional attachment is a flyer describing the **School Health Services Day** hosted by CESA 9. This **one-day conference** is free of charge and is **open to school nurses, health aides, and anyone else in schools (secretaries, paras, etc.) that provide any type of health support to students.**

*Louise*

DPI supports best practices/evidence-based resources but does not vet or endorse products/services. User is responsible to evaluate the resource and how it meets local needs.

# DPI News



## **Measles Webpage Updated**

Two new resources were added to the [DPI's Measles webpage](#). The letter describing school district responsibilities if an outbreak were to be declared by DHS at their school was updated from the 2019 version. The sample letter home to parents shared during 2019's national measles outbreak is posted for reference and use.

## **Additional Forms Added Under Sample Health Plans**

A [sample IHP form that is fillable](#) has been posted on the [Forms webpage](#) under Sample Health Plans. This Individualize Health Care Plan provides space to document the nursing process. It also includes links to Nursing Diagnoses and space to document the existence of other student health plans, educational plans, and accommodation plans. The purpose was to provide a fillable form that also meets the requirements of an IHP used for Medicaid billing.

Additionally, sample **Parent Authorization** forms for [Specialized Health Care](#) and for [Attendant Care Services](#) are now available. School districts are not required to use DPI sample forms. They are provided as reference or use to save school nurses time in creating their own forms.

## **Dates for Fall 2024 New School Nurse Orientation**

See save the date flyer for more information regarding DPI's New School Nurse Orientation to be held October 10-11, 2024, in Stevens Point, Wisconsin.

## **DPI Seeking Session Proposals for Building the Heart of Successful Schools Conference**

The Wisconsin Department of Public Instruction (DPI) Student Services / Prevention and Wellness team and the Wisconsin Safe & Healthy Schools Center are inviting Wisconsin educators, students and school districts, Institutions of Higher Education (IHEs), community-based organizations, and other partners to submit proposals to present pre-conference or sectional sessions.

See attached flyer for more information. School nurses have not traditionally attended or presented at this conference in large numbers. It would be an excellent way to reach your pupil services colleagues and share what you have been doing to successfully provide school health services to your students.

## **Coordinated School Health Consultant Position Announced**

The Wisconsin Department of Public Instruction is hiring a Coordinated School Health Consultant position on the Student Services/Prevention and Wellness Team. Areas of responsibilities include: provide management and coordination for the Coordinated School Health project; plan and facilitate professional development and technical assistance on coordinated school health topics; maintain and build on existing partnerships and collaborations; and assume responsibility for special assignments in concert with the mission and goals of the agency, division, and team.

Applications are due 3/22/24. To find this posting, go to <https://wj.wi.gov/13465>. For questions, please contact Maria Butters at [maria.butters@dpi.wi.gov](mailto:maria.butters@dpi.wi.gov) or (608) 266-2690.

# DPI News



## **Celebrating School Breakfast Week and School Nutrition Month 2024**

How the fork-to-table movement is changing school meals, and the benefits of school breakfast! [View Nutrition Story.](#)

## **Communicable Disease Webpage Updated**

DPI's [Communicable Disease webpage](#) supports the basics of infection control as outlined in the revised CDC [communicable diseases spread by respiratory secretions](#) guidance.

## **DPI Webinar Series- Roadmap for School Mental Health Improvement.**

Join DPI for a webinar series introducing the Roadmap for School Mental Health Improvement. The Roadmap breaks down five steps for improving the quality of a school's current mental health system and provides a flexible approach to promoting student and staff well-being and more equitable outcomes for Wisconsin students. If interested in attending, please register for each webinar separately. All webinars will be recorded. See flyer attached to this newsletter for registration information.

## **Building Comprehensive School Mental Health Systems with Get Kids Ahead Funding**

The Get Kids Ahead (GKA) Initiative provides funding to Wisconsin schools to help build and sustain Comprehensive School Mental Health Systems (CSMHS). A CSMHS provides a continuum of services and supports to promote student and staff mental health and wellbeing. In 2022 and 2023, a total of \$30 million in GKA funds was allocated to 450 Wisconsin school districts, independent charter schools, and tribal schools. Please see this [handout](#) for an overview of how schools across Wisconsin are using their GKA funding to support their school mental health work. Key strategies include increasing student and family access to therapy services, school mental health professional staffing, social emotional learning, staff training and professional development, mental health screening, family engagement and support, and programming related to suicide prevention, bullying prevention, and school safety.

Please feel free to reach out to DPI school mental health consultants at [getmhs@dpi.wi.gov](mailto:getmhs@dpi.wi.gov) for questions or consultation about spending GKA funding or building a CSMHS.

## **Proposed DPI Rule Provides Districts Additional Flexibility, Autonomy on School Start Date**

The hearing to accept public testimony on the proposed rule will be held Monday, March 25, 2024.

[View Start Date Story](#)

*The Get Kids Ahead (GKA) Initiative provides funding to Wisconsin schools to help build and sustain Comprehensive School Mental Health Systems (CSMHS).*

# DPI News

## Information from DPI on Supporting LGBTQ+ Youth

By now you may all have heard about the death of Nex Benedict (they/them), the day after they were beaten by other students in an Oklahoma school bathroom. Nex was a nonbinary, Two Spirit, and Indigenous student. [Here is an article from an Indigenous source.](#)

We know from our own Wisconsin Youth Risk Behavior Survey that LGBTQ+ youth face more bullying at school and experience less belonging at school. Based on national data we know that the presence of an accepting adult can reduce by 40 PERCENT the chances that an LGBTQ+ youth will attempt suicide. An Out for Safe Schools badge is a symbol that a young person can talk to the adult who wears it, or even just know they are there. If you are interested in badges for you or your colleagues, please email [dpisspw@dpi.wi.gov](mailto:dpisspw@dpi.wi.gov)

Here are resources to learn more about how to support LGBTQ+ youth.

### Two New DPI Modules

#### [Basic Concepts](#)

This module will focus on big concepts and some vocabulary, but mostly concepts. These are basic building blocks to understanding LGBTQ+ students and their identities. This module will also cover how to ask questions when you don't understand the terms and concepts being shared or discussed.

#### [Best Practices](#)

This module will focus on simple proven ways to support LGBTQ+ students. These best practices are based on their presence aligning with better outcomes for students. This module will also include a few approaches to avoid.

#### [LGBTQ+ Youth in Crisis Best Practices Webinar Recording](#)

Statewide - Basic concepts, state-level data, best practices  
LGBTQ+ (lesbian, gay, bisexual, transgender, and other/questioning) students, and Black, Indigenous, and People of Color (BIPOC) students, and especially those students who live at the intersection of those identities, experience significant disparities compared to their peers. The latest national and state data show a mental health crisis as a result of a lack of support for these students. This session includes basic LGBTQ+ concepts, data, and best practices.

#### [GSAFE](#)

Statewide - Professional development for educators, GSA support, youth leadership  
GSAFE increases the capacity of LGBTQ youth and students, educational staff, and families to create school environments. GSAFE provides educator professional development, youth leadership, support with policy and procedure development, and assistance starting and maintaining gender and sexuality alliances (GSAs).

# DPI News

## Information from DPI on Supporting LGBTQ+ Youth (Cont.)

### [Welcoming Schools](#)

Nationwide - Books and other materials for caregivers, educators, and students by grade  
HRC Foundation's Welcoming Schools is the most comprehensive bias-based bullying prevention program in the nation to provide LGBTQ+ and gender inclusive professional development training, lesson plans, booklists and resources specifically designed for educators and youth-serving professionals. Our program uses an intersectional, anti-racist lens dedicated to actionable policies and practices. We uplift school communities with critical tools to embrace family diversity, create LGBTQ+ and gender inclusive schools, prevent bias-based bullying, and support transgender and non-binary students.

### [YRBS 2021 Report](#)

Statewide - State-level LGBT student data

The Wisconsin Youth Risk Behavior Survey (YRBS) is conducted as part of a national effort by the U.S. Centers for Disease Control and Prevention to monitor health-risk behaviors of the nation's high school students. These behaviors, in turn, result in the most significant causes of both mortality and morbidity during youth and adulthood. The behaviors monitored by the Wisconsin YRBS include traffic safety; weapons and violence; suicide; tobacco use; alcohol and other drug use; sexual behavior; and diet, nutrition, and exercise.

Wisconsin data includes questions about sexual orientation and gender identity. Check out the most recent data as well as the data of past years using the link above and scrolling to the data by year.

### [U.S. Department of Education Toolkit: Creating Inclusive and Nondiscriminatory School Environments for LGBTQI+ Students](#)

Nationwide - Best practices and supportive materials to improve school environments

The U.S. Department of Education (Department) is committed to helping schools and districts provide welcoming, safe, and supportive educational environments for all students, including students who are lesbian, gay, bisexual, transgender, queer, or intersex (LGBTQI+), and students with LGBTQI+ parents and family members. Recent data from the Centers for Disease Control and Prevention (CDC) show that LGBTQ+ and transgender youth experience more bullying and violence, and as a result of stigmatization and discrimination, are more likely to experience depression and other mental health challenges than their peers.

This resource includes examples of policies and practices that schools and districts can consider developing to support LGBTQI+ students and families. It also highlights Federal resources that schools, students, and parents may find helpful in working to ensure that all students are free to learn in an educational environment without harassment or other discrimination.

# DHS News

## Respiratory Report

[The Weekly Respiratory Report](#) is available and updated bi-weekly

## Wisconsin State Health Officer Paula Tran Statement on CDC Respiratory Virus Guidance

“The Wisconsin Department of Health Services (DHS) is pleased to see [updated respiratory virus recommendations](#) from the U.S. Centers for Disease Control and Prevention (CDC).

These updates reflect what the latest data and science are telling us.

Today we know that far fewer people are being hospitalized and dying in Wisconsin due to COVID-19 compared to prior years. We know that we have more tools than ever to fight the virus. And we know what we can do individually and as entire communities to protect ourselves and each other.

This does not mean that seasonal respiratory viruses are not a threat. COVID-19, flu, and RSV can have serious impacts on our health, and can be deadly. Respiratory viruses and patterns of illness can change. DHS works with experts across the country to understand these changes and updates recommended actions. This means that our actions may change in the future, too.

Today’s updated recommendations emphasize the most important things we can all do to protect ourselves and our communities, and to reduce the impact that these viruses can have at home, work, school, and in our communities. The guidelines also leave in place distinct recommendations for health care settings.

This guidance makes clear how important vaccination, treatment, and staying home when sick are to protecting yourself and those around you from respiratory viruses, including COVID-19.

Over the next days and weeks, DHS will be updating our written and online guidance to align with the CDC recommendations, and to ensure we help every Wisconsinite understand how to best protect themselves and those around them.”

*Please see email sent by DPI on March 5, 2024 for more information.*

## DHS Supports the CDC Recommendation for Spring 2024 COVID-19 Vaccine for Adults Ages 65 and Older

The Wisconsin Department of Health Services (DHS) supports the Centers for Disease Control and Prevention’s (CDC) [recommendation that adults 65 and older should receive an additional dose of the 2023-2024 COVID-19 vaccine this spring.](#)



*Updated recommendations emphasize the most important things we can all do to protect ourselves and our communities, and to reduce the impact that these viruses can have at home, work, school, and in our communities.*

# NASN News

## National Academy of School Nursing Fellows Named for 2024

Eight remarkable professionals have been inducted into the National Academy of School Nursing. Let's celebrate the outstanding achievements and impact of these Fellows of NASN:

- Jane Carol Boyd, Delaware
- Sharon Guthrie, Iowa
- Kathleen A. Hassey, Massachusetts
- Lisa Kern, Florida
- Lynnette Ondeck, Washington
- Cynthia E. Samuel, New Jersey
- Louise F. Wilson, Wisconsin
- Catherine Yonkaitis, Illinois

The Honorary Fellow award is a mark of distinction for non-nurses who support the NASN Vision. We recognize and honor valued partners:

- Gloria Durgin, Maine
- Susan Rogers, Illinois
- Rob Rogers, Illinois
- Pat Roberts, Maine

Join us for the induction ceremony at [the NASN2024 Conference](#) in Chicago, Illinois. - *Kate King, NASN President*

## Promoting Adolescent and Young Adult Health and Well-Being

Adolescence and young adulthood are periods of intense developmental change that present unique health and social needs while also periods of remarkable resilience, growth, and opportunity. NASN, as a proud partner organization of the National Coordinating Committee of the National Center for Adolescent and Young Adult Health and Well-Being, is pleased to share that the [Center's website](#) is now live to support adolescents, their families, and professionals like you who care for them.

## Endometriosis Resources

Endometriosis affects 1 in 10 girls, yet it takes an average of eight doctors and 10 years to diagnose. Early diagnosis would be revolutionary. School nurses can help recognize symptoms. You can listen to the NASN School Nurse Chat episode [Endometriosis Awareness and Education](#), which discusses endometriosis, its impact on adolescents, and the school nurse role.



*Adolescence and young adulthood are periods of intense developmental change that present unique health and social needs while also periods of remarkable resilience, growth, and opportunity.*

# WASN News



## Conference Registration Now Open

WASN leadership has secured funding through the DHS Nurse Workforce Grant for 400 school nurses to attend the conference for FREE!! Registration is still required. [Register here](#). Deadline to register is Monday, April 15, 2024.

# Immunization Action Coalition

## Immunize.org posts new Spanish translations of four resources on improving the vaccination experience

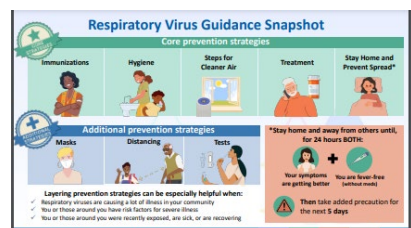
Immunize.org created and posted new Spanish translations of four patient resources on improving the vaccination experience. Use these to support anxious patients of all ages and increase their confidence in accepting vaccination. The resources include:

- [Addressing Vaccination Anxiety for Children: Strategies for Vaccine Recipients and Caregivers](#) (view in [Spanish](#))
- [Addressing Vaccination Anxiety for Infants and Toddlers: Strategies for Parents and Caregivers](#) (view in [Spanish](#))
- [Addressing Vaccination Anxiety in Adolescents and Adults: Strategies for Vaccine Recipients and Caregivers](#) (view in [Spanish](#))
- [Fainting Related to Vaccination: What You Need to Know](#) (view in [Spanish](#))

# CDC

## CDC Has New Infographic on Respiratory Virus Guidance

The new infographic can be downloaded [here](#). It is also attached to this newsletter.



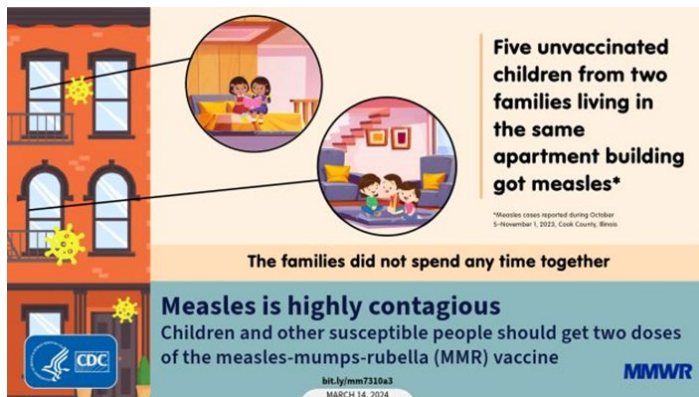


# MMWR

## Notes from the Field: Measles Outbreak

March 14, 2024

The Cook County Department of Public Health in Illinois launched an investigation after five measles cases were reported in October and November of 2023. More than 400 people were exposed to measles, including 13 children younger than 12 months. [Read more.](#)



## “Interim Estimates of 2023–24 Seasonal Influenza Vaccine Effectiveness—United States” published in *MMWR*

CDC published [Interim Estimates of 2023–24 Seasonal Influenza Vaccine Effectiveness—United States](#) on February 29 in *MMWR*. A portion of the summary appears below.

*In the United States, annual influenza vaccination is currently recommended for all persons aged  $\geq 6$  months. .*

*Analysis of data from four vaccine effectiveness (VE) networks estimated interim pediatric influenza VE was 59%–67% in outpatient settings and 52%–61% against influenza-associated hospitalization. Interim adult influenza VE was 33%–49% in outpatient settings and 41%–44% against influenza-associated hospitalization. . . .*

*These findings indicate that the 2023–24 seasonal influenza vaccine is effective at reducing the risk of influenza-associated outpatient visits and hospitalization. Access the *MMWR* article in [HTML](#) or [PDF](#).*

# Medscape Nurses

## FDA Approves First OTC Continuous Glucose Monitor

The US Food and Drug Administration (FDA) has cleared Dexcom's Stelo Glucose Biosensor System as the first over-the-counter continuous glucose monitoring (CGM) system. Unlike Dexcom's G6 and G7 CGM systems, the Stelo is intended for adults with or without diabetes who don't use [insulin](#). "Importantly, this system is not for individuals with problematic [hypoglycemia](#) as the system is not designed to alert the user to this potentially dangerous condition," The FDA said on March 5, 2024 [in a statement](#). [Read more.](#)

## Sulfites Selected as ACDS Allergen of the Year

Sulfites, present in foods, drinks, pharmaceuticals, and personal care products, have been named the "Allergen of the Year" for 2024 by the American Contact Dermatitis Society (ACDS). [Read more.](#)

# Your Local Epidemiologist Blog



## **Why did we lose trust during the pandemic?**

My conversation with Kelley Krohnert

KATELYN JETELINA

March 14

[Read blog.](#)

---

# School Nurse Blog



## **The Relentless School Nurse: Vermont's Kelly McGovern Landwehr, MSN, RN is Advocacy in Action**

Robin Cogan, MEd, RN, NCSN, FNASN, FAAN

March 11

Nurse Practitioner Kelly McGovern Landwehr, MSN, RN, is president of the Vermont State School Nurses' Association, and a school nurse at Middlebury Union High School. She is also a courageous advocate spotlighting the epidemic of vaping at school, but also at home. Sometimes our advocacy is born out of personal experiences. I applaud you, Kelly, for sharing the compelling story of your daughter's experience with vaping, in her own words. [Read blog.](#)

---

# Wisconsin Asthma Coalition



## **American Lung Association Announces New Resources**

The American Lung Association is excited to announce the **National launch of our "Creating Lung Friendly Environments for Youth"** [webpage](#). On the [Healthy Air Tools for Schools and Districts webpage](#). [Read press release.](#)

# Miscellaneous



## **School Nurse Job Posting**

The Sparta Area School District is looking for a dedicated School Nurse to join our team for the 2024-2025 school year! We are located in the beautiful Coulee Region of Southwest Wisconsin. We offer a competitive salary and benefits package and a supportive work environment. Apply via this [WECAN link](#).

## **March Is Women's History Month**

Prioritizing women's health and their physical, psychological, emotional, and social well-being has never been more important. During Women's History Month, take the time to learn more about women's health issues and related resources. [Learn more...](#)

## **WHO Guidance for School Health Services**

The World Health Organization in collaboration with partners is planning to develop an implementation guidance for School Health Services (SHS). We are happy to inform you that the online consultation for informing the development of the guidance is now opened.

**Deadline for comments: 27 March 2024**

To develop a guidance that speaks to contexts in different regions and countries, WHO is seeking users' perspective on key needs, challenges and facilitating factors in implementing SHS in their respective countries. We need your expertise to capture key implementation aspects that the guidance needs to cover. Please complete the survey yourself, as relevant, and share with partners.

The survey is aimed at professionals involved in SHS, including school nurses, doctors, psychologists, counselors, dental care workers, and policymakers within the health and education sectors in charge of school health programs and/or school health services.

The survey web pages, and the online surveys are available in Arabic, Chinese, English, French, Russian and Spanish. Please go on the top of the page to select the language, as shown in the snapshot

English: [Public Consultation for the scoping of the implementation guidance of School Health Services \(who.int\)](#)

## **Reducing the Impact of Eating Disorders on Adolescent Girls**

Eating disorders are behavioral health conditions that affect physical and mental health through altered ideas about food, eating habits, weight, exercise, body image, and related factors. There are many different types of eating disorders, the most common including anorexia nervosa, bulimia nervosa, and binge-eating disorder. They are among the deadliest mental illnesses, second only to opioid misuse, and co-occur often with anxiety, depression, obsessive-compulsive disorder, substance use, and post-traumatic stress disorder. [Read more.](#)

*To develop a guidance that speaks to contexts in different regions and countries, WHO is seeking users' perspective on key needs, challenges and facilitating factors in implementing SHS in their respective countries.*

# Miscellaneous

## Frontline Heroes...

March is Women's History Month, making it the perfect time to shine a light on the remarkable women who have sculpted our healthcare landscape, yet remain shadows in our historical consciousness. While figures like Florence Nightingale and Clara Barton are rightfully celebrated for their foundational contributions to nursing, countless unsung heroines have also paved the way for modern nursing, embodying courage, innovation, and unwavering compassion. Because your time is precious, here are just a few examples of these remarkable women.

For school nurses, who daily navigate the challenges of caring for our students, drawing inspiration from these trailblazing figures can offer a profound sense of connection and purpose. Their stories, rich with dedication and spirited pluck, underscore the fundamental role that nurses have always played—not just in healing and comforting, but in transforming healthcare practices, advocating for public health, and championing social reforms.

Continued on next page...



*For school nurses,  
who daily navigate  
the challenges of  
caring for our  
students, drawing  
inspiration from these  
trailblazing figures  
can offer a profound  
sense of connection  
and purpose.*

# Miscellaneous



Picture Copied From the Blog Entitled Frontline Sheroes...



Lillian Wald

In 1893, Lillian Wald established the Henry Street Settlement in New York City, which is recognized as the beginning of community nursing in the United States. Wald's objective was to provide medical care while also improving the social conditions of her patients. A public health pioneer, it was Wald who first championed and advocated for nurses in schools. Her approach to healthcare, emphasizing the importance of social determinants of health, provides a robust model for school nurses today who aim to enhance the health of school communities by working at the intersection of health and education.



Lina Rogers

With extremely limited supplies and hard-to-imagine conditions, in 1902 Lina Rogers became the first school nurse when she was selected by Lillian Wald to provide medical care for students in four schools within New York City. The care Rogers provided made such an impact that the program was expanded and absenteeism rates among school kids due to illness dropped by 90% within a year. By 1909, 141 nurses were hired in NYC's 458 public schools, and Los Angeles hired its first school nurse in 1904.



Charity Collins Miles

An inspiring trailblazer, Charity Collins Miles was the first Black school nurse and the first Black nurse ever hired by the U.S. Public Health Service. At a time when the Board of Nursing refused to allow Black nursing school graduates to even apply for their nursing license registration, she persisted and was hired in 1911 to be the school nurse for all Black students in the segregated schools throughout Atlanta. She recognized the need to better support the community's healthcare needs and created supplementary services, including prenatal care, infant welfare, oral hygiene, and health education.



Susie Walking Bear Yellowtail

Raised on a Crow American Indian reservation, Susie Walking Bear Yellowtail broke barriers by becoming one of the first registered nurses of Native American descent in the United States. She witnessed firsthand the lack of access to medical care and discrimination against her people. Motivated by the injustices, Susie dedicated her career to fighting for equal access to healthcare, advocating for women and children on reservations, and improving support for surrounding communities. President John F. Kennedy awarded her the President's Award for Outstanding Nursing in 1962, and in 2002, she was also inducted into the American Nurses Association Hall of Fame.



Donna Lee Wong

The author of multiple pediatric textbooks— Essentials of Pediatric Nursing, Clinical Manual of Pediatric Nursing, and Pediatric Quick Reference to name just a few, nurse Donna Wong revolutionized pediatrics when, in 1983, with the help of a child life specialist, she created a pain scale that children could understand by using facial expressions. The Wong-Baker FACES Pain Scale is now widely used by healthcare professionals assessing kids (including by many school nurses!), helping children to better communicate their pain, leading to more effective management and improved outcomes.

# Children's Safety Network

## Poison Prevention

According to the [Centers for Disease Control and Prevention](#), in 2021, 74 children ages 9 and younger and 1,628 adolescents ages 10-19 died from unintentional poisoning in the United States. The numbers seem to be going up: as noted in the [CSN fact sheet](#) below, among those ages 0-9, the numbers were 49 per year in 2016-2019 ([CDC WISQARS 2016-2019](#)) and 63 in 2020 ([CDC WISQARS 2020](#)). Among those ages 10-19, they were 725 per year in 2016-2019 ([CDC WISQARS 2016-2019](#)) and 1,448 in 2020 ([CDC WISQARS 2020](#)).

[National Poison Prevention Week](#), which takes place from March 17 to March 23, is an opportunity to raise awareness of child and adolescent poisoning as an important public health issue and support the implementation of effective prevention practices. CSN and partner resources that can guide and inform poisoning prevention efforts include:

- [Poison Help Videos | Health Resources and Services Administration \(HRSA\)](#)
- [National Poison Prevention Week Partner Toolkit | America's Poison Centers](#)
- [Poison Help | America's Poison Centers](#)
- [2022 Annual Report of the National Poison Data System® \(NPDS\) from America's Poison Centers®: 40th Annual Report | America's Poison Centers](#)
- [Behind the Headlines: Safety Tips for Kids and Cannabis | Children's Safety Network \(CSN\)](#)
- [Unintentional Poisoning Deaths in U.S. Infants, Children, and Adolescents | CSN](#)
- [Safe Use and Administration of Medication to Young Children | CSN](#)
- [Poisoning Prevention: New Challenges and a Novel Tool | CSN](#)

CSN will be hosting [a poisoning prevention webinar](#) on March 25 from 1:00PM-2:00PM ET. Please see below for more details.



*According to the Centers for Disease Control and Prevention, in 2021, 74 children ages 9 and younger and 1,628 adolescents ages 10-19 died from unintentional poisoning in the United States.*

# Practice Points

By Louise Wilson



## ***RN Action Agendas Support School Nurses' Data Sharing***

Those of you who are NASN members would have received notice of the online *NASN School Nurse* publication of the article “State School Nurse Consultants Issue RN Action Agendas.” The article will appear in the May printed issue but was first published online March 14, 2024. It only seems fitting that this month I promote these *Action Agendas* from one of the organization for which I provide leadership. It is also fitting that the article will be printed during May, which is the month National School Nurse Day is celebrated.

As I prepared my comments for the traditional DPI State School Nurse Consultant update at the WASN conference, it occurred to me how these *RN Action Agendas* could be used to support school nurses sharing their health services data among district stakeholders. I'll mention these *RN Action Agendas* again in that address, so bear with me.

The [first RN Action Agenda](#) provides rationale for using the title and designation “RN” to demonstrate being a qualified professional nurse. Using the professional credentials of RN distinguishes school nurses from unlicensed staff such as paraprofessionals who may serve in an assistive role in the health office. The [second RN Action Agenda](#) encourages school nurses to inform school administrators of their preparation, license, and authority to practice because of the significant legal issues, implications for staffing, and potential impacts on the safety of students.

The [National Association of State School Nurse Consultants \(NASSNC\)](#) is a professional organization for school nurses employed at the state level by state agencies. State school nurse consultants provide guidance to school districts, school nurses, parents, organizations, and agencies on school health services. NASSNC developed these *RN Action Agendas* to support school nurses. These *RN Action Agendas* call for:

- Increased awareness that school nursing is anchored in preparation as an RN;
- Recognition of school nurses as experts at the intersection of health and learning; and
- Utilization of school nurses' wide range of knowledge and skills to address health-related barriers to learning of individual students, as well as anticipating population health needs of the school community as a whole.

(Luehr, Shultz, and Riley 2024, 2)

*These RN Action Agendas call for:*

- *Increased awareness that school nursing is anchored in preparation as an RN;*
- *Recognition of school nurses as experts at the intersection of health and learning; and*
- *Utilization of school nurses' wide range of knowledge and skills to address health-related barriers to learning of individual students, as well as anticipating population health needs of the school community as a whole.*

In Wisconsin, the title “School Nurse” is reserved for those registered nurses meeting the [legal definition of School Nurse](#). Registered nurses working in schools are encouraged to distinguish themselves from the unlicensed staff or licensed practical nurses working in health offices. Using the RN credential documents the registered nurse’s legal authority to practice [professional nursing](#). Those nurses who meet criteria to be called School Nurses in Wisconsin should also use that title. By default, nurses who do not meet the definition should refrain from using the legal title School Nurse, but are encouraged to use the title and credentials of Registered Nurse.

These *RN Action Agendas* support data reporting. It is critical in such reports to demonstrate the depth and breadth of school nurses’ expertise.. School administrators may not be aware that school nurses provide school-aged children and adolescents with important prevention services, early detection, and mental health services plus facilitate access to clinics and other community services. The second *RN Action Agenda* provides school nurses with suggestions for starting a conversation that would lead to administrators having a better understanding of school nursing’s specialty practice (Luehr, Shultz, and Riley 2024, 3).

How this data is reported is important to capture the attention of decision makers. To provide a more accurate description of school nursing the *RN Action Agendas* provide tools for school nurses to describe the difference between health aids, Licensed Practical Nurses, and Registered Nurses by comparing nursing and teacher licensure and preparation.

[RN Action Agenda #2](#) provides a concise summary of nursing preparation and licensure. It also provides suggestions for aligning school nursing with teaching to increase education administrators’ understanding of school nursing activities and impact on students’ learning.

Not only do the services and staff need to be described, but both the benefits and risks to students’ health and successful learning. By collecting and reporting data school nurses document barriers to education.

The *RN Action Agendas* remind school nurses that the focus needs to be on the impact on students. Data collection and reporting should not focus on nursing jobs, but on the benefits of student health services for students -better health and educational success. If school nurses are looking for statements to describe these benefits, they will find them in [RN Action Agenda #2](#).



*Registered nurses working in schools are encouraged to distinguish themselves from the unlicensed staff or licensed practical nurses working in health offices. Using the RN credential documents the registered nurse’s legal authority to practice professional nursing.*



To make decisions about student health services school nurses, administrators, and other stakeholders need accurate data. School nurses' collection of accurate school health services data will be further discussed at the WASN conference and in the Health Service Survey Q&A meetings starting April 5, 2024.

I encourage school nurses to look up these *RN Action Agendas* and use them to improve their data reports.

#### Reference

Luehr, Ruth Ellen, Colleen Schultz, and Andrea Riley. 2024. State School Nurse Consultants Issue RN Action Agendas. *NASN School Nurse*. 2024;0(0). doi:[10.1177/1942602X231223167](https://doi.org/10.1177/1942602X231223167)

*To make decisions about student health services school nurses, administrators, and other stakeholders need accurate data.*

This publication is available from:  
Learning and Support  
Student Services Prevention and Wellness Team  
(608) 266-8857  
<https://dpi.wi.gov/sspw/pupil-services/school-nurse>

March 2024 Wisconsin Department of Public Instruction

The Department of Public Instruction does not discriminate on the basis of sex, race, color, religion, creed, age, national origin, ancestry, pregnancy, marital status or parental status, sexual orientation, or ability and provides equal access to the Boy Scouts of America and other designated youth groups.





WHIZRESOURCES.COM

PO Box 2991 Denton, TX 76202 | 214-709-5559

## Hiring RNs and LVNs/LPNs for Summer Camp Positions Throughout the US

**Apply Here:** [WhizResources.com](http://WhizResources.com) | [Medical Staff Application](#)

### *The Rewards of Working as a Camp Nurse*

- *Impact the lives of children and adults*
- *Salary of \$1300-1800/week and free tuition for children (worth appx. \$1200-1500/week for each child)*
- *Round-trip airfare or ground transportation provided*
- *Lodging and meals furnished*
- *Build on your pediatric nursing experience*

*For over 20 years hundreds of NPs, RNs and LPNs have worked at camps through WhizResources. They have made a difference at camps while fully utilizing their nurse experience. Many are school nurses who have the summer available, and others are nurses who travel or are retired or are new graduates. Some even have a full-time job but carve out a few weeks to work at a camp.*

**More Information:** [www.whizresources.com](http://www.whizresources.com)

***rick@whizresources.com***

***214-709-5559***



WHIZRESOURCES.COM

PO Box 2991 Denton, TX 76202 | 214-709-5559

## *Finding the Right Fit for Your Needs*

- *Many top-notch camps in locations across the United States:*  
[\*Here's our link to current list of openings\*](#)
- *Assignments from two weeks (sometimes shorter) up to ten weeks*
- *Primarily traditional "healthy kids" camps*
- *Some camps accommodate children younger than camp age through childcare or day camp*
- *Friends and family members can work at a camp together*
- *Assistance with licensing in another state if needed (including payment of license fees)*

*Ready for an amazing summer?*

***Apply Here:*** [WhizResources.com](http://WhizResources.com) | [Medical Staff Application](#)

***Or send your resume to*** [rick@whizresources.com](mailto:rick@whizresources.com)

- *We will contact you to set up a phone interview*
- *There are no fees to you*

***More Information:*** [www.whizresources.com](http://www.whizresources.com)

***rick@whizresources.com***

***214-709-5559***



WHIZRESOURCES.COM

PO Box 2991 Denton, TX 76202 | 214-709-5559

## Hiring RNs and LVNs/LPNs for Summer Camp Positions Throughout the US

**Apply Here:** [WhizResources.com](http://WhizResources.com) | [Medical Staff Application](#)

### *The Rewards of Working as a Camp Nurse*

- *Impact the lives of children and adults*
- *Salary of \$1300-1800/week and free tuition for children (worth appx. \$1200-1500/week for each child)*
- *Round-trip airfare or ground transportation provided*
- *Lodging and meals furnished*
- *Build on your pediatric nursing experience*

*For over 20 years hundreds of NPs, RNs and LPNs have worked at camps through WhizResources. They have made a difference at camps while fully utilizing their nurse experience. Many are school nurses who have the summer available, and others are nurses who travel or are retired or are new graduates. Some even have a full-time job but carve out a few weeks to work at a camp.*

**More Information:** [www.whizresources.com](http://www.whizresources.com)

***rick@whizresources.com***

***214-709-5559***



WHIZRESOURCES.COM

PO Box 2991 Denton, TX 76202 | 214-709-5559

## *Finding the Right Fit for Your Needs*

- *Many top-notch camps in locations across the United States:*  
[\*Here's our link to current list of openings\*](#)
- *Assignments from two weeks (sometimes shorter) up to ten weeks*
- *Primarily traditional "healthy kids" camps*
- *Some camps accommodate children younger than camp age through childcare or day camp*
- *Friends and family members can work at a camp together*
- *Assistance with licensing in another state if needed (including payment of license fees)*

*Ready for an amazing summer?*

***Apply Here:*** [\*\*WhizResources.com | Medical Staff Application\*\*](#)

***Or send your resume to [rick@whizresources.com](mailto:rick@whizresources.com)***

- *We will contact you to set up a phone interview*
- *There are no fees to you*

***More Information:*** [\*\*www.whizresources.com\*\*](http://www.whizresources.com)

***[rick@whizresources.com](mailto:rick@whizresources.com)***

***214-709-5559***

# DPI School Nurse Summer Institute



Understanding the Current Landscape and  
Prevention Strategies for Vaping, Opioid  
Overdose, and Fentanyl Exposure

**August 5, 2024**

**8:30 am – 4:00 pm Hilton Double Tree Downtown-  
Madison, Wisconsin**

**This School Nurse Summer Institute will identify opportunities for school nurses to incorporate e-cigarette and vaping preventions strategies into their practices.**

**School nurses will gain knowledge about the current landscape of opioid use /abuse and the risk to students.**

Registration is limited to 70 participants.

**Location:**

Hilton Double Tree Downtown-  
525 West Johnson Street,  
Madison, Wisconsin 53703

**Registration:**

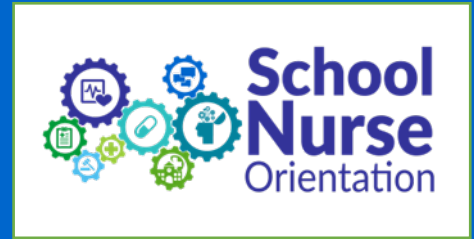
Will open in May 2024

**Cost: \$50.00**

*Nursing Professional Continuing Education Credits will be applied for this activity*

# DPI New School Nurse Orientation

October 10-11, 2024  
Holiday Inn - Sevens Point Wisconsin



## Purpose:

Training is for those registered nurses who are new to the specialty of school nursing or are working in a Wisconsin school district for the first time.

## Featured Topics:

- WI School Health laws
- Delegation in schools
- IEPs, 504 Plans
- Health Records
- Writing Health Plans

## Who Should Attend:

It is appropriate for school and registered nurses who have worked in a school-setting zero to three years.

## Registration:

Cost \$175.00

Registration will open in August 2024.



*Save the Date!*  
**SCHOOL  
HEALTH  
SERVICES  
DAY**



Tuesday  
**June 11, 2024**

8:15 am - 3:15 pm

Central WI  
Convention & Expo  
Center, Rothschild

Audience: School Nurses and  
Health Aides/Assistants

Cost: Free

Topics will be selected by your peers and will not duplicate the April  
WASN conference topics.

Questions?

Contact

Teri Phalin, [tphalin@cesa9.org](mailto:tphalin@cesa9.org)

715-453-2141

**Registration**  
**&**  
**Schedule**  
**At-A-Glance**



[www.cesa9.org](http://www.cesa9.org)



# Respiratory Virus Guidance Snapshot

## Core prevention strategies

CORE STRATEGIES

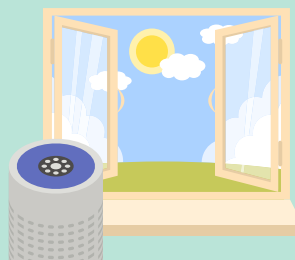
### Immunizations



### Hygiene



### Steps for Cleaner Air



### Treatment



### Stay Home and Prevent Spread\*



ADDITIONAL STRATEGIES

## Additional prevention strategies

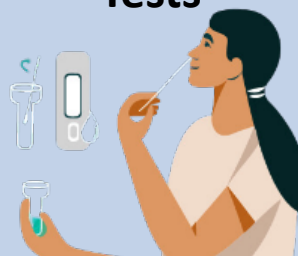
### Masks



### Distancing



### Tests



**\*Stay home and away from others until, for 24 hours BOTH:**



Your symptoms are getting better



You are fever-free (without meds)

**Layering prevention strategies can be especially helpful when:**

- ✓ Respiratory viruses are causing a lot of illness in your community
- ✓ You or those around you have risk factors for severe illness
- ✓ You or those around you were recently exposed, are sick, or are recovering

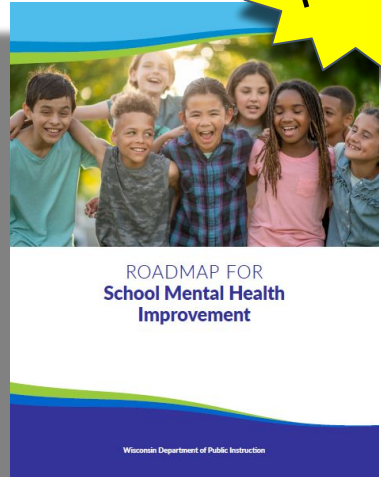


**Then take added precaution for the next 5 days**

# School Mental Health Improvement Webinar Series

Join DPI for a webinar series introducing the [Roadmap for School Mental Health Improvement](#). The Roadmap breaks down five steps for improving the quality of a school's current mental health system and provides a flexible approach to promoting student and staff well-being and more equitable outcomes for Wisconsin students.

\*If interested in attending, please register for each webinar separately. All webinars will be recorded.



## **Intro to the [Roadmap for School Mental Health Improvement for State and Regional Partners](#)**

March 20th, 2024 10:00-10:45 AM  
Register [here!](#)

## **Intro to the [Roadmap for School Mental Health Improvement for School and District Staff](#)**

March 21th, 2024 10:00-10:45 AM  
Register [here!](#)

## **Intro to the [Fishbone Tool](#)**

April 4th, 2024 10:00-10:30 AM  
Register [here!](#)

**Intro to the [Driver Diagram Tool](#)**  
April 11th, 2024 10:00-10:30 AM  
Register [here!](#)

**Intro to the Measurement for Improvement Tool**  
April 18th, 2024 10:00-10:30 AM  
Register [here!](#)

**Intro to the [Empathy Interview Tool](#)**  
April 25th, 2024 10:00-10:30 AM  
Register [here!](#)

**Intro to the Rapid Cycle Testing Tool**  
May 2nd, 2024 10:00-10:30 AM  
Register [here!](#)





# WISCONSIN DEPARTMENT OF **Public Instruction**

## **Student Services/Prevention and Wellness Team Spring 2024 Updates**

### **Staffing**

The following staff joined the Student Services/Prevention and Wellness (SSPW) team or changed positions:

- Christine Anderson - Assistant Director
- Erick Blasing- Education Consultant, Stronger Connections Grant
- Andrea Gugel- Policy Initiatives Advisor- Executive, Division for Learning Support

### **Funding Opportunities**

#### **Department of Public Instruction (DPI) Competitive Grant Inventory**

All current and future competitive grant opportunities available through the Department of Public Instruction are listed on DPI's [Competitive Grant Inventory website](#).

### **Training and Resources**

#### **2024 Building the Heart of Successful Schools Conference**

The 2024 Building the Heart of Successful Schools (BHSS) Conference will be held on December 5, 2024, with a pre conference on December 4, 2024. Stay up to date on the 2024 Conference details by visiting the [Wisconsin Safe & Healthy Schools Center \(WISH\) website](#).

Watch the [2023 Building the Heart of Successful Schools Conference recap video](#).

#### **NEW! DPI's Roadmap for School Mental Health Improvement**

The [Wisconsin School Mental Health Framework](#) provides a vision for building more equitable systems for promoting mental health in schools. Regardless of a school's current school mental health infrastructure, leaders can utilize the [Roadmap for School Mental Health Improvement](#) to strengthen their mental health supports. The Roadmap outlines five steps, based on the Center for Disease Control and Prevention's Community Change Process, including: commitment, assessment, planning, implementation, and reflection. The Roadmap provides a menu of corresponding best practices in each step of the improvement journey. This offers a flexible approach to improvement; how a team moves through the process is dependent upon resources, existing structures, supports, and



# WISCONSIN DEPARTMENT OF Public Instruction

priorities. The Roadmap is meant to guide ongoing improvement work, focusing on the small steps that lead to big impacts. For a quick reference on how the Roadmap compliments the Wisconsin School Mental Health Framework, check out [Comprehensive School Mental Health from Theory to Action](#).

## DPI Suicide Prevention Curriculum

The newly developed curriculum will be available on the [DPI Youth Suicide Prevention Student Programs website](#) in late spring. Voluntary implementation trainings will be available in multiple locations to explore the suicide prevention curriculum. The training includes an overview of the entire series of units (3rd - 5th, 6th - 8th, and 9th - 12th), breakouts for in-depth learning about the elementary or middle/high school format and content, best practices for implementation, resources for suicide prevention initiatives, and learning with and from peers and trainers. See the [flyer](#) for additional information.

## School-Based Peer-Led Wellness Programs in Wisconsin

Students are actively helping their peers and addressing youth mental health in school districts throughout the state. [School-based peer-led wellness programs](#) are in place in 300 schools or districts, reaching the majority of Wisconsin's 421 school districts. Youth leading these groups, along with their adult advisors, help to improve mental health and wellness in their school communities, which often radiates out to their broader community. A variety of programs are in place, including [Hope Squad](#), [NAMI Raise Your Voice Club](#), [REDgen School](#), and [Sources of Strength](#). Each dot of the map represents a school or district participating in one of these peer-led wellness programs.

## Peer to Peer Suicide Prevention Example Programs and Funding Opportunities Video

This [video](#) provides an overview of Peer to Peer Suicide Prevention programs most often used in Wisconsin, along with information on funding sources.

## 2018-2023 WI School Social Work Trend Data

This [one page summary](#) with graphs highlights the number of licensed and employed school social workers, percentage of public school districts with at least one school social worker, and the ratio of Wisconsin students to school social worker full-time equivalent (FTE) over the last five years. Some possible reasons for the improvements include impacts of the state [Aid for Mental Health Programs](#), impacts of the [Federal School-Based Mental Health Professionals Grant Program](#), and increased attention on the need for and importance of [comprehensive school mental health systems](#). Questions about the roles of



# WISCONSIN DEPARTMENT OF **Public Instruction**

mental health professionals may be answered in the publication, [School Based Mental Health Professionals in Wisconsin Document](#). Questions and answers about school social work licensing are found in this [Social Work Licensure Bulletin](#). Need additional information about supporting a school social worker on a Tier 1 License with Stipulations? Do not forget our publication, [Best Practice Considerations for Emerging Professionals: School Social Worker - One Year License with Stipulations \(Tier I\)](#).

## **Bullying Prevention Online Training Program**

The Student Services/Prevention and Wellness Team (SSPW), in collaboration with Dr. Chad Rose at the University of Missouri, is once again offering a free, online bullying prevention training course for Wisconsin educators! This course is designed for all educators including regular and special education teachers, student services professionals, administrators, out-of-school time program staff, and any other school personnel. This five-module course can be completed by an individual in approximately two hours.

The five modules provide foundational knowledge of bullying prevention:

**Module 1:** What is Bullying?

**Module 2:** Predictive and Protective Factors Associated with School Bullying

**Module 3:** Intervention for Bullying in the Schools

**Module 4:** Group and Individual Interventions and Federal Law Related to Bullying

**Module 5:** Resources

Please visit [DPI's Comprehensive Approach to Bullying Prevention website](#) to register for access to this training program. Please contact [bullyingprevention@dpi.wi.gov](mailto:bullyingprevention@dpi.wi.gov) with any questions!

## **Youth Risk Behavior Survey (YRBS)**

The YRBS is part of a national effort by the Centers for Disease Control and Prevention (CDC) to monitor health-risk behaviors. The survey is available to all schools throughout the state and is administered to students in sixth to twelfth grades and helps the state and local communities monitor trends in youth health and risk behaviors. Knowing which healthy behaviors and which risk behaviors are on the rise helps schools and communities create more effective policies and programs to promote health enhancing behaviors.



# WISCONSIN DEPARTMENT OF Public Instruction

If you have not had the opportunity to review the 2021 YRBS statewide data and summary report, please visit the [YRBS website](#). These figures highlight the need for us to continue collecting YRBS data so we can identify how these challenges change over time and devote more attention to our most at-risk students.

Administration for the 2023 YRBS concluded in June, and Wisconsin's YRBS data was submitted to the Centers for Disease Control and Prevention (CDC) shortly after survey administration concluded. Approximately seven hundred and sixty five (765) middle and high schools administered the YRBS in Wisconsin in 2023.

WDPI is currently awaiting their analysis and hoping to receive and share the results from the CDC soon. The statewide data as well as remaining school\* and all district reports will be made available as soon as possible. As soon as the data is available, we will send an email via the YRBS email distribution list. *\*Public and some private high school reports have already been shared with the schools. The remaining schools are currently in process.*

If you haven't already, please subscribe to the YRBS e-mail list by sending an email to [subscribe-wi\\_yrbs\\_general@lists.dpi.wi.gov](mailto:subscribe-wi_yrbs_general@lists.dpi.wi.gov) with the word "Subscribe" in the heading. For any questions related to the YRBS, please visit the [YRBS website](#) or contact Casie Sulzle at [casie.sulzle@dpi.wi.gov](mailto:casie.sulzle@dpi.wi.gov) or Denise Kohout at [denise.kohout@dpi.wi.gov](mailto:denise.kohout@dpi.wi.gov).

## School Health Profiles

Data collection for the 2024 School Health Profiles began in January. Approximately 400 schools within Wisconsin were selected to participate in this national survey. School Health Profiles contains two surveys: 1) a survey for principals and 2) a survey for lead health teachers. Both surveys are aimed at collecting data regarding current health and wellness programs and policies to inform future policies and to assist with funding allocations. If your school was selected and you are a principal or lead health teacher, please complete the survey right away. If you are unsure if your school was selected for the survey or you have any questions, please contact Casie Sulzle at [casie.sulzle@dpi.wi.gov](mailto:casie.sulzle@dpi.wi.gov) or Denise Kohout at [denise.kohout@dpi.wi.gov](mailto:denise.kohout@dpi.wi.gov).

Additional information regarding School Health Profiles including the 2022 School Health Profiles results can be found at the [School Health Profiles website](#).



# WISCONSIN DEPARTMENT OF **Public Instruction**

## **Wisconsin Educators, Please Tell Us What Training and Support You Need!**

To help the [Wisconsin Safe & Healthy Schools Training Center](#) & Wisconsin Department of Public Instruction-SSPW Team better meet the professional learning needs of schools and communities, **please complete the following survey by March 22, 2024.**

The [survey](#) is completely voluntary and takes less than 10 minutes.

### **State Grants/Funding in Progress**

#### **Alcohol and Drug Abuse (AODA) Student Mini-Grant**

Comprehensive school health programs require youth involvement to create environments conducive to healthy, resilient, and successful learners. As part of the Department of Public Instruction (DPI) efforts to encourage youth initiatives, we offered the AODA Student Mini-Grant Program for the 35th year, in the 2023-2024 school year. Funds were made available to 68 programs throughout the state to support education, prevention, and intervention programs designed by the students, targeting alcohol and other drug abuse (AODA) and other youth risk behaviors such as tobacco use, alcohol traffic safety (ATS), violence, suicide, etc. In addition, a major funding priority of the mini-grant program is the involvement of youth in the planning and implementation of the project. Consideration was given based on the educational value of the project and statewide geographic distribution of funds. Additional information is available on the [Student AODA Mini-Grant Program website](#).

#### **Peer-to-Peer Suicide Prevention Grant**

The Student Services/Prevention and Wellness Team awarded 61 grants in round one of the Peer-to-Peer (P2P) Suicide Prevention Grant in the 2023-24 school year. A second round of grants is currently undergoing review. The P2P grants have a focus on training public, private, tribal and charter Wisconsin high school students, to recognize the signs of suicide shown by fellow students. Peer-to-peer programs use messages of hope, health, and strength to develop peer leaders and resources for students who may be experiencing challenges. Recipients of a grant under this program may use the grant funds to support an existing peer-to-peer suicide prevention program or implement a new peer-to-peer suicide prevention program. The amount of each individual grant award may not exceed \$1,000. Additional information is available on the [Peer-to-Peer Suicide Prevention Grant website](#).



# WISCONSIN DEPARTMENT OF **Public Instruction**

## **2023-25 Alcohol and Other Drug Abuse (AODA) Program Grant**

This two-year grant will be used by public school districts in Wisconsin to provide a myriad of supports and interventions in order to develop and deliver a comprehensive K-12 AODA program. Programming that may be supported by the grant includes: curriculum delivery, staff training, peer-to-peer program support and parent and community activities. Areas which may be addressed by the grant include: AODA, bullying/violence prevention, commercial tobacco/vaping prevention, and Alcohol Traffic Safety. A total of \$907,978 was allocated to 46 projects representing 63 school districts, including five consortium projects. This is a funding rate of 74 percent of the districts seeking funds, totaling 75 percent of the dollars requested by all applicants. Grantees receive first and second year funding of equal amounts for 2023-2025. Supporting documents, forms and resources can be found on the [AODA Program website](#).

## **Opioid Prevention Grant**

Twenty-three school districts and private schools throughout Wisconsin competed for and received \$250,000 in Opioid Prevention Grant funds. The Opioid Prevention Grant funds were awarded by WDPI, in partnership with the WDHS, and represent a one-time, single-year opportunity for Wisconsin schools.

## **Federal Grants/Funding in Progress**

### **School-based Interventions to Promote Equity and Improve Health, Academic Achievement, and Well-being of Students**

The Wisconsin Department of Public Instruction was awarded a five-year cooperative agreement from the Centers for Disease Control and Prevention (CDC). The purpose of this grant is to protect and improve the health and wellbeing of school-age children and adolescents in underserved and disproportionately affected communities. The DPI will use the Whole School, Whole Community, Whole Child (WSCC) model to: establish key partnerships to support school health programs; promote dissemination and implementation of CDC school health guidelines, tools, and resources through Professional Development (PD) and Technical Assistance (TA); and use action planning to implement physical activity, school nutrition, and school health policies, practices, programs, and services within state and local education agencies (LEAs), schools, and out-of-school time (OST) settings. More information will be coming soon about how to join the Healthy Schools Academy.





# WISCONSIN DEPARTMENT OF **Public Instruction**

## **Project AWARE 2023 (Advancing Wellness and Resiliency in Education) Grant**

DPI was awarded its third Project AWARE grant by the Substance Abuse and Mental Health Services Administration (SAMHSA) for \$9 million for five years through 2028. The purpose of this program is to develop a sustainable infrastructure for school-based mental health programs and services by leveraging state, regional, and local level partnerships to implement mental health-related promotion, awareness, prevention, intervention, and resilience activities to ensure that school-aged youth have access and are connected to appropriate and effective behavioral health services. This project will focus on building comprehensive school mental health systems in the Wabeno and Crandon communities, with an emphasis on bringing added services and support for students who identify as LGBTQ+. The other focus of this project will be on enhancing regional partnerships to increase accessibility of school mental health technical assistance statewide, with a focus on rural and under-resourced communities. For more information on AWARE 2023, contact the Project Director, Jess Frain at [jessica.frain@dpi.wi.gov](mailto:jessica.frain@dpi.wi.gov).

## **Stronger Connections Grant Competition**

The Bipartisan Safer Communities Act (BSCA) was signed into law by President Biden on June 25, 2022. The Wisconsin Department of Public Instruction (WDPI) was allocated \$12.5 million to administer a BSCA Stronger Connections competitive grant to high-need Local Education Agencies (LEAs) to support safe and healthy students under [section 4108 of the ESEA](#).

The Stronger Connections Grant was open for applications from September 25-November 15, 2023. Following the application submissions, an external and internal review process was conducted. DPI received a total of 121 applications out of 302 eligible high-needs LEAs which equated to 40 percent of eligible applicants. Our 121 applications were made up of 117 Public School Districts and four Independent Charter Schools requesting a total of \$34.7 million.

On Friday, February 23, 40 LEAs were awarded the Stronger Connections Grant funds. The performance period of the grant runs from February 1, 2024-September 30, 2026.

## **STOP School Violence Grant**

The STOP School Violence Grant was funded by the US Department of Justice for \$2 million over three years. The Department of Public Instruction is partnering with CESA 10 in order to implement the Trauma Research Awareness for Isolated and New Educators in



# WISCONSIN DEPARTMENT OF **Public Instruction**

Rural Wisconsin (TRAIN-WI) Project across the southern part of Wisconsin. CESA 10 has already been highly successful in implementing the TRAIN-WI Project in the northern part of the state. The TRAIN-WI Project helps educators to gain a comprehensive understanding of trauma through providing training in the Neurosequential Model in Education (NME), developed by Bruce Perry and the Neurosequential Network. Thus far, 161 people in southern Wisconsin have completed the Introduction to NME training through the TRAIN-WI Project. In addition, 32 people have begun the 11-month NME Trainer training. In spring and summer of 2024, an additional 19 cohorts of Introduction to NME training will be offered in southern Wisconsin. The project's goal is that trainers and advanced trainers are located at CESAs, as well as in large districts, to ensure long-term sustainability and to exponentially increase the number of adults and students benefiting from the program. The TRAIN-WI Project has also hosts virtual implementation calls to provide ongoing professional learning and collaboration opportunities to those who have completed the training. A newly launched website (<https://trainwi.cesa10.org/home>) provides additional trauma sensitive schools resources. For more information, please contact Libby Strunz, School Mental Health Consultant, at [elizabeth.strunz@dpi.wi.gov](mailto:elizabeth.strunz@dpi.wi.gov).

## **Title IV, Part B, Nita M. Lowey 21st Century Community Learning Center Grant**

Grantees receive a five-year award to provide academic enrichment. More information on the program can be found on the [Nita M. Lowey 21st Century Community Learning Center Grant Program website](#).

## **School-Based Mental Health Professionals Grant**

Funded by the U.S. Department of Education for five years through September, 2025. The purpose of this project is to increase the number of school-based mental health service professionals recruited and retained through a multi-faceted approach. The Federal School-Based Mental Health Professionals (SBMHP) Grant Project is using federal funds to expand pathways with contracted University of Wisconsin (UW) programs for aspiring school counselors, school psychologists, and school social workers to become licensed school-based mental health professionals with the goal of reducing pupil to pupil service professional ratios. The SBMHP Grant Project is partnering with ten UW pupil services programs: four school social work programs, three school social work programs, and three school counseling programs. This expansion includes using funds to recruit, expand online programming, remove barriers for potential students and assist in placing and retaining licensed professionals in Local Education Agencies (LEAs) with demonstrated need. Project activities will prioritize attracting individuals who reflect the racial and ethnic



# WISCONSIN DEPARTMENT OF **Public Instruction**

diversity of the local population of the LEA's community. During the 2023-2024 academic year, the SBMHP Grant Project will be partnering with UW partners to create free virtual field supervision and mentoring modules for pupil services staff to expand school based support for early and new professionals. For more information on the School-Based Mental Health Professionals Grant Project, reference the [Federal School-Based Mental Health Professionals Grant Program website](#).

## **Title IV, Part-A**

Districts with a Title I allocation in the previous fiscal year receive a formula allocation to support enhancements in well-rounded education, safe and healthy school environments and effective use of technology. For more information, visit the [Title IV-A website](#). For the Safe and Healthy Students component of this Title, professional development opportunities can be found on the [WISH Center website](#).



# Wisconsin Lions Camp

## Seasonal Healthcare Staff

### SEASONAL HEALTHCARE POSITIONS AVAILABLE

#### IN THE HEALTH LODGE:

# 2-3

WEEKLY RESIDENTIAL HEALTHCARE STAFF

# 4-5

HOURLY HEALTHCARE STAFF (SUNDAYS)

#### DURING DIABETES SESSIONS

JUNE 16-20 & 23-27, 2024

# 2-3

LEAD MEDICAL STAFF  
(PER SESSION)

# 12-14

CABIN MEDICAL STAFF  
(PER SESSION)

Weekly residential healthcare staff live in the health lodge Sunday – Thursday. Tasks include administering medications, treating illnesses and injuries and assessing overall camp health.

Hourly healthcare staff work during Sunday arrival days to check in medications for campers and ensure Camp has all information needed to care for the camper’s healthcare needs.

Lead medical staff are weekly positions during the diabetes sessions to support, mentor and work with the cabin medical staff. A strong working knowledge of diabetes care is required.

Cabin medical staff are weekly positions during diabetes sessions to support, mentor and assist campers with their diabetes management. They are supported by the lead medical staff and a strong working knowledge of diabetes care is required.

All healthcare staff must be licensed in the State of Wisconsin to work at Camp. MD, RN, NP, PA licensure required for weekly positions. LPN licensure will only be considered for the Sunday hourly staff role. CDCES certification is accepted for the Diabetes Session only.



**PAY STARTS AT \$700/SESSION FOR WEEKLY HEALTHCARE STAFF & CABIN MEDICAL STAFF**

**\$900/SESSION FOR LEAD MEDICAL STAFF  
\$25/HOUR FOR HOURLY HEALTHCARE STAFF**



# Wisconsin Lions Camp

*A project of the Wisconsin Lions Foundation, Inc.*



3834 County Road A, Rosholt, WI 54473  
715-677-4969 | wisconsinlionscamp.com  
info@wisconsinlionscamp.com



# Wisconsin Lions Camp

## Seasonal Healthcare Staff Benefits



### DIVERSE EXPERIENCE

We serve campers from five different populations: Deaf or Hard of Hearing, Blind or Visually Impaired, Intellectual Disabilities or Autism, Diabetes and Epilepsy.

### LIVING AT CAMP

Providing healthcare at our 440 acre property, which includes a private lake, offers plenty of recreational experiences during time off blocks. All healthcare and medical staff will sleep in separate lodging away from campers and your meals are included in your stay.

### MAKE A DIFFERENCE

Learn more about a variety of medical conditions, medications and treatments while providing the best week of summer for our campers who look forward to this valuable camp experience all year. Keeping our campers healthy is critical to their success at Camp.

### CREATING CONNECTIONS

Enjoy seeing campers outside the healthcare setting and connecting with them in a camp environment. Healthcare and medical staff are able to join campers in activities, be a part of camp events and programs, and do all this in casual camp attire.

### MENTORING

Mentor healthcare assistants and nursing students to help them grow and gain valuable experience in their professional journey while collaborating with fellow medical staff. Serve as a resource for all seasonal staff to keep them healthy throughout the summer season.

### SUPERVISION

Our healthcare staff are supervised by our Healthcare Supervisor, Camp Director and Medical Director (who is located in Stevens Point). Care is provided using a set of standing orders as well as policies and procedures.



**Scan the code to apply now!**

[wilionscamp.workbrightats.com](http://wilionscamp.workbrightats.com)

Questions? Email Paula Lauer, RN, Healthcare Supervisor at [plauer@wisconsinlionscamp.com](mailto:plauer@wisconsinlionscamp.com).

Text or call Andrea Yenter, Camp Director at 715-572-8179.



## Wisconsin Lions Camp

*A project of the Wisconsin Lions Foundation, Inc.*

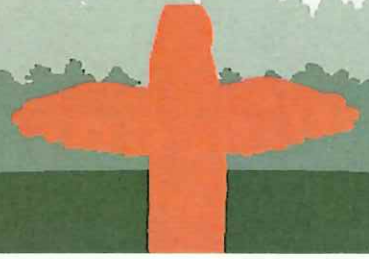


3834 County Road A, Rosholt, WI 54473  
715-677-4969 | [wisconsinlionscamp.com](http://wisconsinlionscamp.com)  
[info@wisconsinlionscamp.com](mailto:info@wisconsinlionscamp.com)



# Wisconsin Lions Camp

## Who's Who Summary 2023



### Populations Served

Blind or Visually Impaired: Youth & Adults

Intellectual Disabilities or Autism: Youth & Adults

Deaf or Hard of Hearing: Youth & Adults

Epilepsy Youth

Camper Applications  
Available:

January 15, 2024

### 2024 Dates

Week	Population	Ages	Application Deadline
June 2-6	Blind or Visually Impaired	18+	April 26, 2024
June 9-13	Blind or Visually Impaired/Epilepsy	6-17	May 17, 2024
June 16-20	Diabetes	10-17	April 5, 2024
June 23-27	Diabetes	10-17	April 5, 2024
June 30-July 4	Intellectual Disabilities or Autism	18-25	By invitation
July 7-11	Intellectual Disabilities or Autism	10-17	May 17, 2024
July 14-18	Intellectual Disabilities or Autism	10-17	May 17, 2024
July 21-25	Deaf or Hard of Hearing	6-17	May 17, 2024
July 28-Aug. 1	Deaf or Hard of Hearing	6-17	May 17, 2024
August 10	Hustle S'more and S'more Fun at Lions Camp		
August 12-16	Deaf or Hard of Hearing	18+	July 12, 2024



## Wisconsin Lions Camp

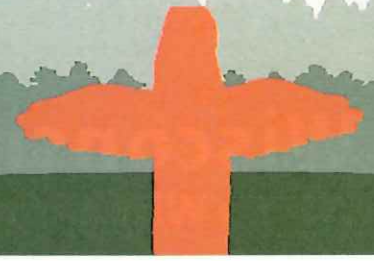
*A project of the Wisconsin Lions Foundation, Inc.*

3834 County Road A, Rosholt, WI 54473  
715-677-4969 • [www.wisconsinlionscamp.com](http://www.wisconsinlionscamp.com)  
[info@wisconsinlionscamp.com](mailto:info@wisconsinlionscamp.com)



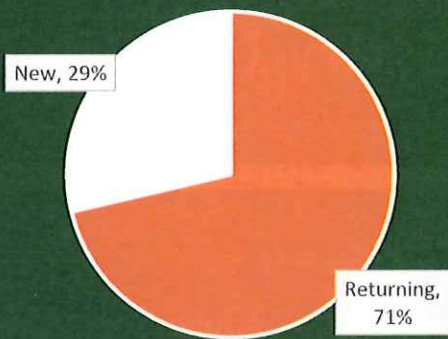
# Wisconsin Lions Camp

## Who's Who Summary 2023

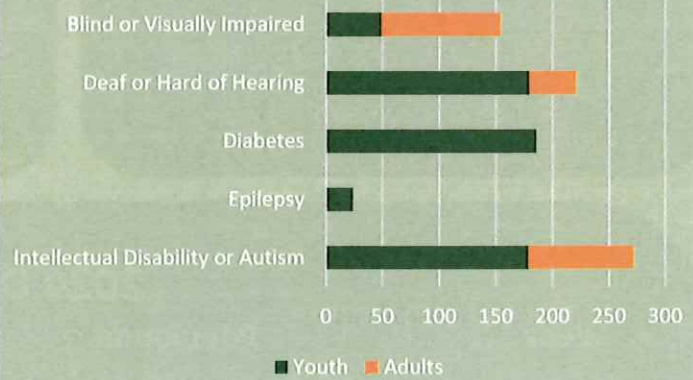


Total Campers: 857

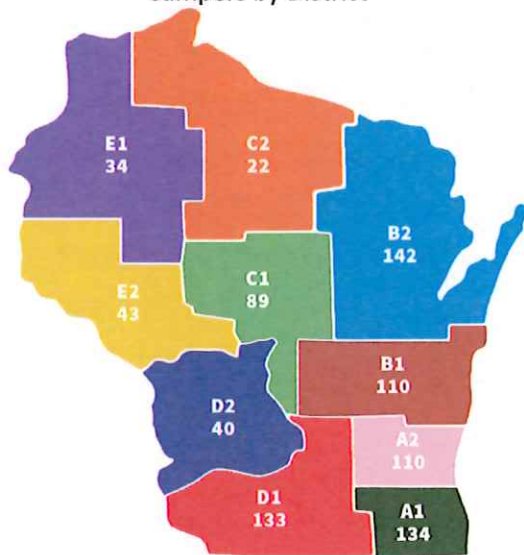
Returning vs. New Campers



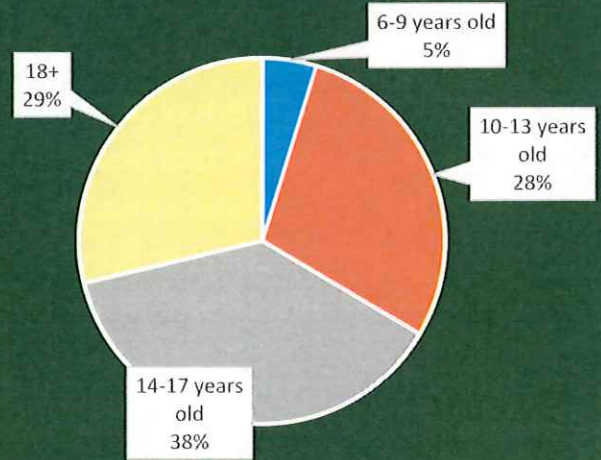
Campers by Population



Campers by District



Campers by Age



# Wisconsin Lions Camp

A project of the Wisconsin Lions Foundation, Inc.

3834 County Road A, Rosholt, WI 54473  
 715-677-4969 • [www.wisconsinlionscamp.com](http://www.wisconsinlionscamp.com)  
[info@wisconsinlionscamp.com](mailto:info@wisconsinlionscamp.com)

