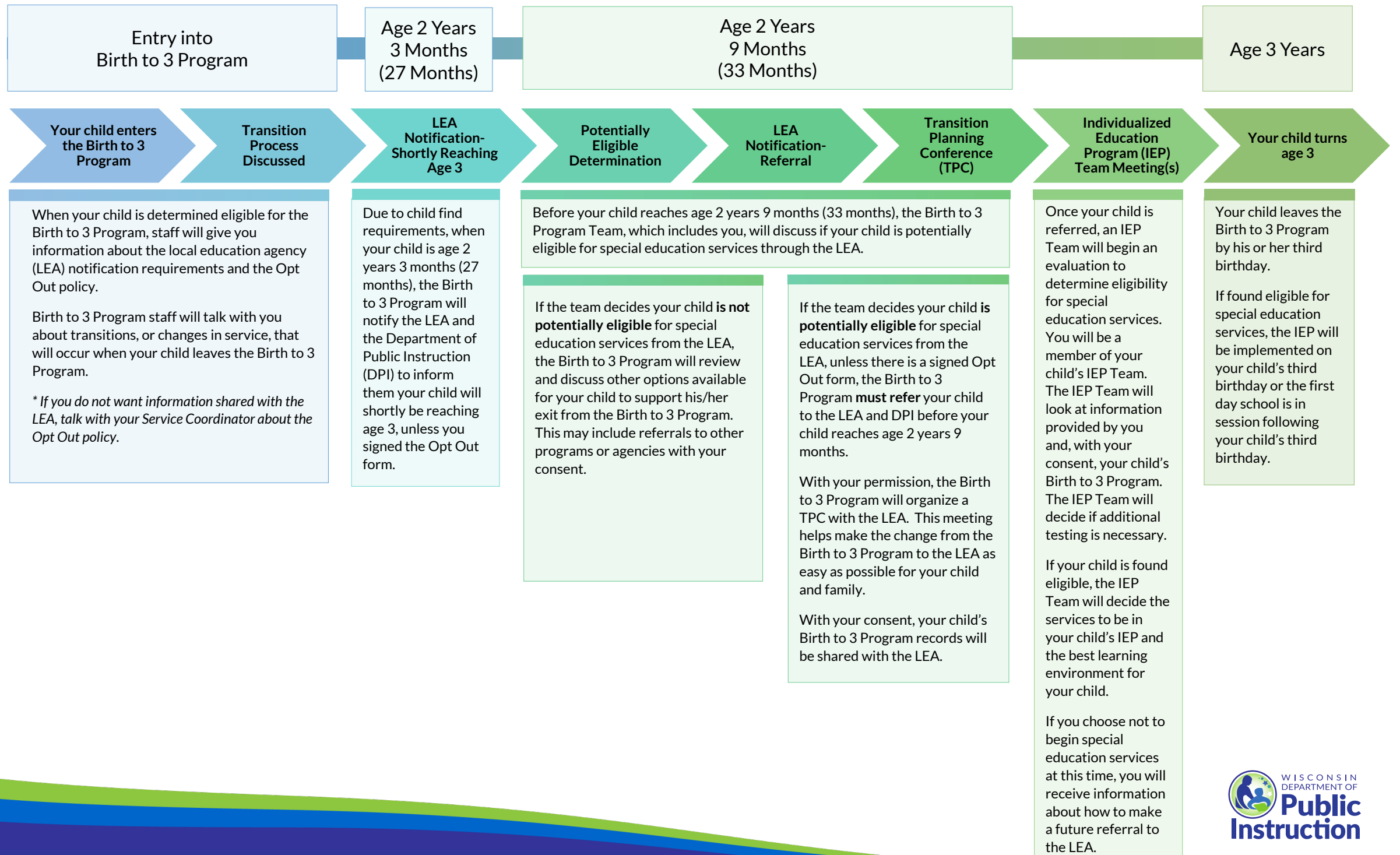


# Birth to 3 Program Transition

## Process for Children Leaving the Birth to 3 Program at Age 3



Entry into Birth to 3 Program

Age 2 Years 3 Months (27 Months)

Age 2 Years 9 Months (33 Months)

Age 3 Years

Your child enters the Birth to 3 Program

Transition Process Discussed

LEA Notification-Shortly Reaching Age 3

Potentially Eligible Determination

LEA Notification-Referral

Transition Planning Conference (TPC)

Individualized Education Program (IEP) Team Meeting(s)

Your child turns age 3

When your child is determined eligible for the Birth to 3 Program, staff will give you information about the local education agency (LEA) notification requirements and the Opt Out policy.

Birth to 3 Program staff will talk with you about transitions, or changes in service, that will occur when your child leaves the Birth to 3 Program.

*\* If you do not want information shared with the LEA, talk with your Service Coordinator about the Opt Out policy.*

Due to child find requirements, when your child is age 2 years 3 months (27 months), the Birth to 3 Program will notify the LEA and the Department of Public Instruction (DPI) to inform them your child will shortly be reaching age 3, unless you signed the Opt Out form.

Before your child reaches age 2 years 9 months (33 months), the Birth to 3 Program Team, which includes you, will discuss if your child is potentially eligible for special education services through the LEA.

If the team decides your child is **not potentially eligible** for special education services from the LEA, the Birth to 3 Program will review and discuss other options available for your child to support his/her exit from the Birth to 3 Program. This may include referrals to other programs or agencies with your consent.

If the team decides your child is **potentially eligible** for special education services from the LEA, unless there is a signed Opt Out form, the Birth to 3 Program **must refer** your child to the LEA and DPI before your child reaches age 2 years 9 months.

With your permission, the Birth to 3 Program will organize a TPC with the LEA. This meeting helps make the change from the Birth to 3 Program to the LEA as easy as possible for your child and family.

With your consent, your child's Birth to 3 Program records will be shared with the LEA.

Once your child is referred, an IEP Team will begin an evaluation to determine eligibility for special education services. You will be a member of your child's IEP Team. The IEP Team will look at information provided by you and, with your consent, your child's Birth to 3 Program. The IEP Team will decide if additional testing is necessary.

If your child is found eligible, the IEP Team will decide the services to be in your child's IEP and the best learning environment for your child.

If you choose not to begin special education services at this time, you will receive information about how to make a future referral to the LEA.

Your child leaves the Birth to 3 Program by his or her third birthday.

If found eligible for special education services, the IEP will be implemented on your child's third birthday or the first day school is in session following your child's third birthday.