

Chetek-Weyerhaeuser Area School District

A Progressive Learning Community

“Education is the Most Powerful Weapon Which You Can Use to Change the World”

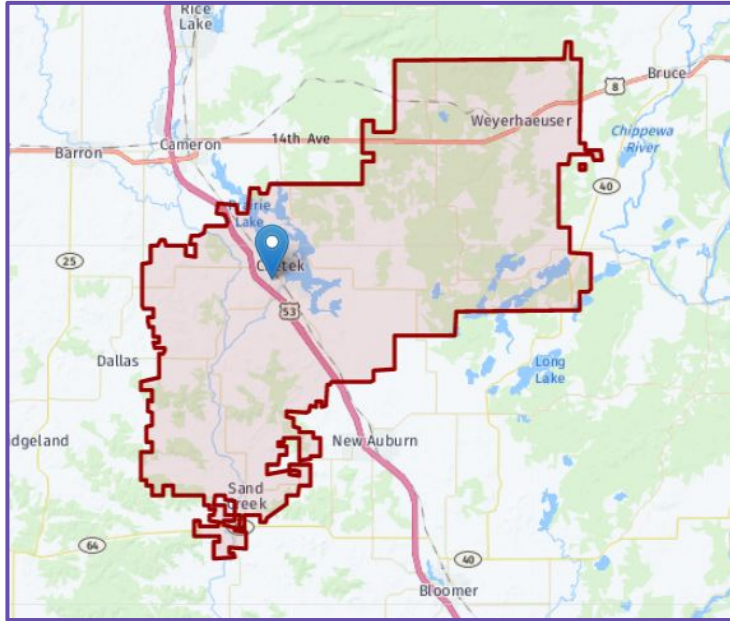
-Nelson Mandela

Big Enough for Opportunities, Small Enough to Care



Chetek-Weyerhaeuser Area School District

A Snapshot of CWASD



- 285 square miles
- Comprised of four counties
 - Barron
 - Rusk
 - Chippewa
 - Dunn
- 15 municipalities
- Consolidated District (2010-2011)



Chetek-Weyerhaeuser Area School District

District Demographics - Who Are We?

- 150 staff members
- 2 buildings
 - Roselawn Elementary, grades pre-K - 5 (plus childcare)
 - High School/Middle School, grades 6 - 12
- Approximately 1000 students
 - 8.4% minority student population
 - 9.7% student with disabilities
 - 47% of Students are Low Socioeconomic Status
- Student - Teacher Ratio = 13.2
- Student - Staff Ratio = 7.2



Chetek-Weyerhaeuser Area School District

District Demographics - Who Are We?

- \$15,000,000 budget
- \$9,000,000 (60+%) fund balance
- In third year of statutory \$2,000,000 per year revenue limit exemption (consolidation)
- High Property Value District - Property Value Per Student = \$910,000
- District Revenue: Local = 68% | State = 22% | Federal/Other = 10%
- Adjusted gross income of district residents = \$43,000



Chetek-Weyerhaeuser Area School District

Success is Built on Student-First Practices

Overall Score



Significantly Exceeds Expectations

District

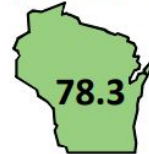
Overall Score



Significantly Exceeds Expectations

High School

Overall Score



Exceeds Expectations

Middle School

Overall Score



Exceeds Expectations

Elementary



Chetek-Weyerhaeuser Area School District

District Highlights



- Two-time winner of US News and World Report “Silver Medal”; Ranked #84 in WI High Schools
- CW HS recognized as Level III AP PaceSetter school
- All Schools received the “School of Distinction” designation by Wisconsin RTI Center.
- Fully implemented student/learning-friendly grading practices which significantly reduced the number of failing grades (240 F’s in 2009; 14 F’s in 2019).
- Hosted both State Superintendent Evers, State Superintendent Stanford Taylor and Governor Walker



Chetek-Weyerhaeuser Area School District

District Highlights

- Full-scale child care program servicing children ages 6 weeks - 12 years old
- Licensed professional therapist on staff to provide clinical mental health services to our students.
- Multi-level system of supports for social-emotional learning
- Exceptional technical education programming (Students have placed #1, #2, & #3 at State competitions in Welding the last two years)
- MS STELM (science, technology, engineering, language arts, & math) Programming

Chetek-Weyerhaeuser Area School District

District Highlights

- More than 30 different clubs/co-curricular activities for students to participate
- Community “Give-Back” Day
- Professional Learning Community (continuous improvement) district
- \$3M addition/renovation to Roselawn Elementary to provide 21st Century learning spaces (without referendum)



Chetek-Weyerhaeuser Area School District

District Highlights

- One of the first secondary schools in the State of Wisconsin to fully implement standards-based grading
- Successful fine arts programming including instrumental & vocal music, arts and theatre.
- Roselawn Elementary twice recognized as a “High Progress School” by the Wisconsin Department of Public Instruction
- Roselawn Elementary named a “School of Recognition” for PBIS implementation by Wisconsin PBIS Network



Chetek-Weyerhaeuser Area School District

Vision | Mission | Beliefs

VISION

Create a high-performing, student-centered school district that meets the needs of ALL students.

MISSION

C-W students are responsible, caring, productive and healthy citizens with knowledge and skills to achieve their dreams.

BELIEFS

Collective Commitment To Ensure Learning Occurs for Every Student

All Students Learn at High Levels

Student-Driven Decisions

Visionary Leadership

Collaboration



Chetek-Weyerhaeuser Area School District

Guiding Philosophies

Focus on Learning

Collaborative Culture

Results Orientated



Chetek-Weyerhaeuser Area School District

Administrative Collective Commitments

- Identify ways to showcase our students/staff/programs/systems
- Work within the PLC framework to attain building /department level goals.
- Find time for collaboration to complete the work layered under the 4 questions
- FOCUS our efforts on student learning & reduce distractors
- Intentional focus on literacy improvement



Chetek-Weyerhaeuser Area School District

OUR DISTRICT IS
EXTRAORDINARY BECAUSE
OF OUR PEOPLE



Chetek-Weyerhaeuser Area School District

SPECIAL THANK YOU

Larry Zeman
Linda Krans
Heather Bohl
Lisa Ippolite
Bryan Johnson
Jason Miller
Joe Bognar
Dom Olson
Carol Moon

Scott Kowalski
Tyler Nelson
Tammy Lenbom
Rita Hong
Julia Zappa
Bob Morehead
Anne Etten
Courtney Hinnenkamp
All CW Students



Afternoon Sectional Schedule

1. Roselawn Elementary School Presentation and Tour
 - Tour of Roselawn Elementary, Child Care Center and Visit Classrooms.
 - Building Social/Emotional Success with a Behavior Framework within an Elementary School
2. Multi-Tiered System of Supports for Social Emotional Learning and Mental Health Services Continuum of Services
3. Standards-Based Grading/Learner-Friendly Grading Practices/Assessment
4. Career and Technical Education Programs

