



Infants, Toddlers, and Families **Experiencing Homelessness**

Wisconsin EHCY Conference Early Childhood Breakout Session

| Tuesday, October 11th, 2022

About SchoolHouse Connection

SchoolHouse Connection works to overcome homelessness through education.

We provide strategic advocacy and practical assistance in partnership with schools, early childhood programs, institutions of higher education, service providers, families, and youth.

WEBSITE:

schoolhouseconnection.org

NEWSLETTER:

schoolhouseconnection.org/sign-up

- Federal and state policy advocacy
- Q&A from our inbox
- Webinars and implementation tools
- Youth leadership and scholarships

1

Overview

2

Data trends & key takeaways

3

Questions & next steps



Overview

DEFINITION

Who is Eligible?

Children and youth
who lack a fixed,
regular, and adequate
nighttime residence.



Sharing the housing of others due to loss of housing, economic hardship, or similar reasons.



Living in motels, hotels, trailer parks, or camping grounds due to lack of alternative adequate accommodations.



Living in emergency or transitional shelters.



Living in cars, parks, abandoned buildings, substandard housing, bus or train stations, or similar settings.

Families often stay with others temporarily because of lack of shelter availability, and the fear of having children removed from their custody.

Staying with others puts families, infants, and toddlers in vulnerable, harmful situations, and conditions that may contribute to developmental delays. Parents may stay with abusive/exploitive people, or trade sex in order to have a place to stay.



DEFINITION

Unaccompanied Youth

A child or youth without a fixed, regular, and adequate nighttime residence and not in the physical custody of a parent or guardian.



Youth run away from home due to abuse or neglect.

- 40-60% of unaccompanied youth were abused physically at home.
- 17-25% of unaccompanied youth were abused sexually at home.
- Research links parental substance abuse and youth running away from home



Parents force youth out of the home due to conflicts.

- Sexual orientation and gender identity
- Pregnancy

Infants, Toddlers, & Families Experiencing Homelessness

1.3 MILLION

babies, toddlers, and young children under age 6 experienced homelessness in 2018-2019

(USED 2018-2019 Profiles)

44% of young women (age 18-25) and 18% of young men experiencing homelessness are current or expectant parents to over

1.1 MILLION young children

([Chapin Hall](#), University of Chicago)

Infants, Toddlers, & Families Experiencing Homelessness



Infancy is the period of life when a person is most at risk of living in a homeless shelter. (HUD Annual Report to Congress)



Homelessness is more than a housing problem; it has many systemic drivers and complex causes, as well as far-reaching consequences for child development.



Families experiencing homelessness face multiple barriers to accessing quality early childhood programs that can provide comprehensive support and connections.

OVERVIEW

Infants, Toddlers, & Families Experiencing Homelessness

15.4%

Of infants and toddlers live in crowded housing, which is known to jeopardize child development. 2.9% of babies and toddlers have moved three or more times since birth.

[State of Babies Yearbook 2022 \(Zero to Three\)](#)

Hispanic, American Indian/Alaska Native, and Black Babies

Have a higher incidence of living in crowded housing, and low-income babies are nearly three times more likely to live in crowded housing.

Homelessness Has Serious Consequences for Young Children



Homelessness in infancy has been found to be associated with delays in language, literacy, and social-emotional development, putting children at risk for later academic problems.



The younger and longer a child experiences homelessness, the greater the cumulative toll of negative health outcomes.



The impacts of homelessness on young children are long-lasting, even once families are housed, including on children's school readiness.

Homelessness Also Has Long-Term Consequences



The high school graduation rate for students experiencing homelessness is **68% compared to 85% for all students**. This is the lowest graduation rate of any student sub-group, including economically disadvantaged.



High school students who experience homelessness are **10x more likely to become pregnant or get someone pregnant**.



In addition to the academic impacts, homelessness in the early years can cause **developmental delays, social-emotional challenges, and long-term trauma**.

Data Collection & Methodology

DATA COLLECTION & METHODOLOGY

Population

How did we calculate the total population of infants and toddlers experiencing homelessness in each PCI-funded state?

First grade students identified as homeless in each state

Total number of first grade students in each state

X

Kids Count estimate of children ages 0 to 4 in each state



This is a conservative estimate. Underidentification is a known issue in k-12 schools. Younger children face a greater risk of homelessness.

DATA COLLECTION & METHODOLOGY

Enrollment

Which early childhood data did we use to get enrollment rates?

- Early Head Start (birth - 3)
- Child Care (birth - 3)
- Home Visiting (Parents as Teachers, birth - 3)

What data is missing or incomplete?

- Two states' child care data is listed as "insufficient" via the Office of Child Care
- It would be important to have some additional home visiting data, as well as Early Intervention

Key Takeaways

- 1 **Infants, toddlers, and families** experiencing homelessness are significantly under-enrolled in early childhood programs.
- 2 **Some infants, toddlers, and families** experiencing homelessness may be enrolled in, but not identified by, early childhood programs.
- 3 **More data and better reporting mechanisms** are needed to get a clearer picture of the need and to inform policy and practice.



Erin Patterson

Director of Education Initiatives

erin@schoolhouseconnection.org

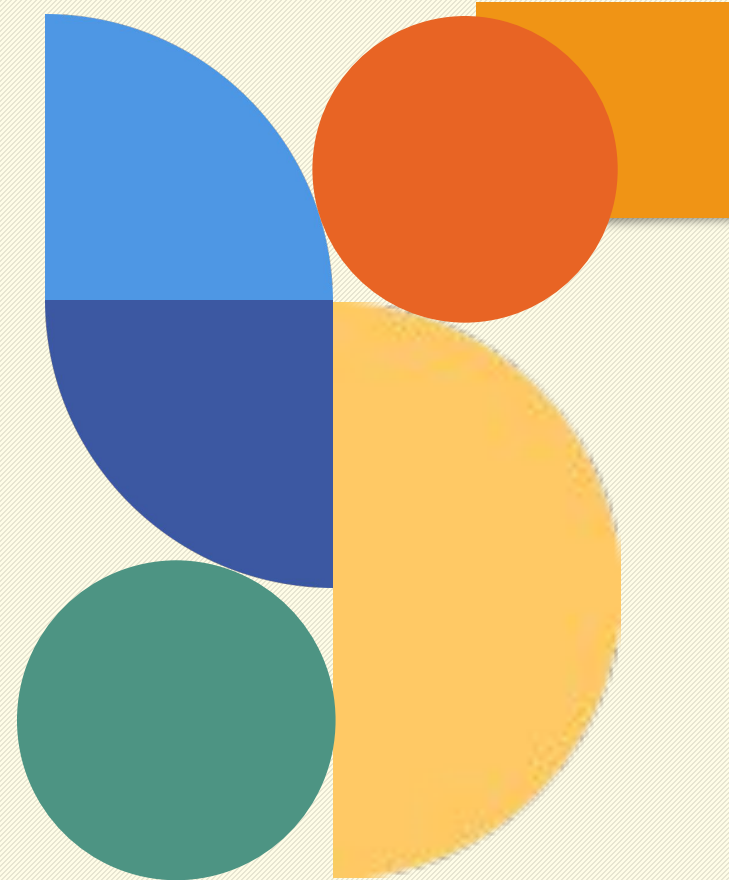


Wisconsin Early Childhood
Collaborating Partners

Supporting Wisconsin's Youngest Students Experiencing Homelessness

October 11, 2022

2022 EHCY Conference

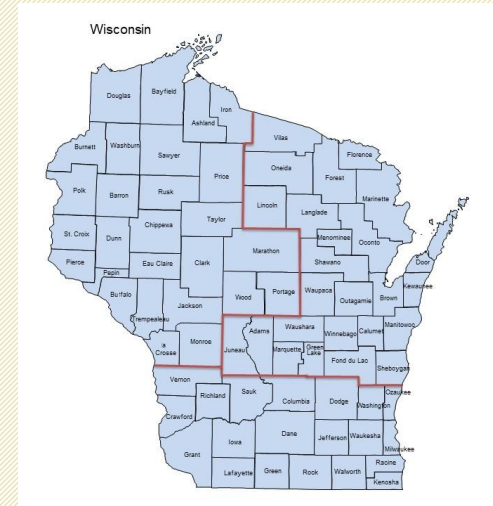




Maria Kietzman

Southern Region Early
Childhood Outreach
Specialist.

Statewide Focus on
Educating Youth
Experiencing
Homelessness and Child
Find





Wisconsin Early Childhood Collaborating Partners

SHARE updates, resources,
initiatives, data, and research

&

STRENGTHEN cross-sector
relationships in early childhood

Vision:

All children will be healthy,
nurtured, safe, and successful.

It's All About
Collaborating!





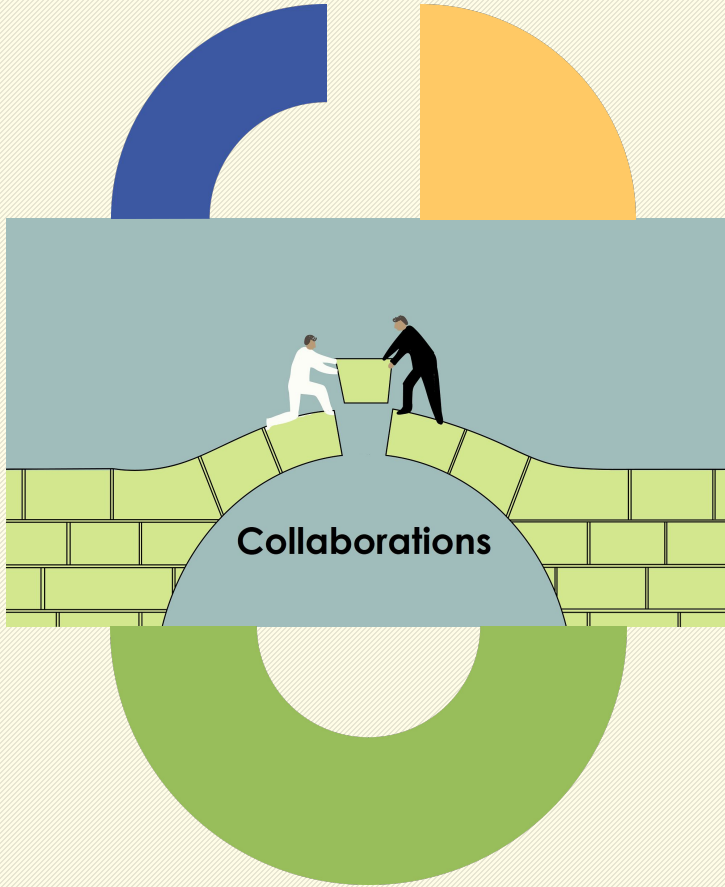
Parents
Families
Caregivers



Schools
Learning Centers
Districts



B-3
Home Visiting
Community Programs



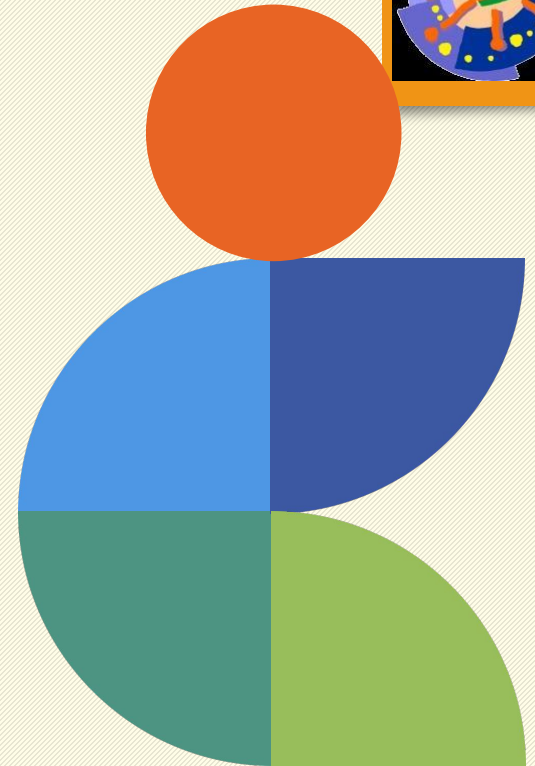
Of Course, we will
spend time
collaborating
together.

Connection to (DAP) Developmentally Appropriate Practices

Guideline 2:

Engaging in Reciprocal Partnerships with
Families and Fostering Community
Connections

[NAEYC- Developmentally Appropriate Practices \(DAP\) Position
Statement](#)



Family Engagement is Key

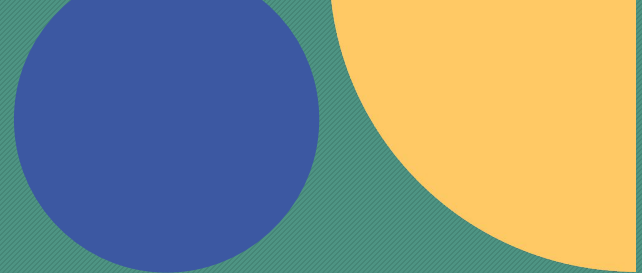
Parents are children's primary and most important caregivers and educators.

-[Wisconsin Model Early Learning Standards Guiding Principal](#)



“If we care about promoting the long term healthy development of children, we need to care deeply about their parents, as they have the greatest impact on their child’s development.”

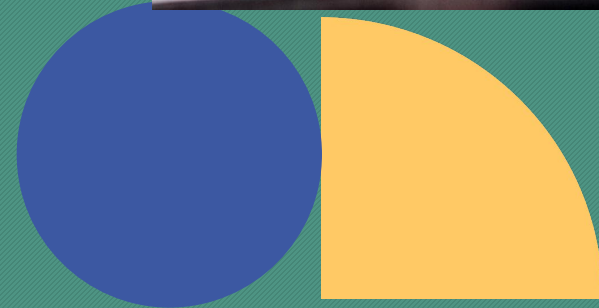
- [Zero to Three Comments on Family Engagement](#)



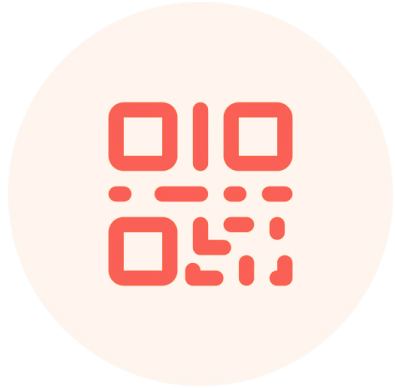
Use Multiple Communication Methods



- Meta (Facebook) messaging
- Wifi Text
- WhatsApp
- Emails
- Notes sent home
- Memos posted throughout environment
- Send notes with cooperating programs (Home Visiting/shelter)



slido



Join at slido.com
#EC-Homelessness

① Start presenting to display the joining instructions on this slide.

slido



What form of communication do you have most success with?



School Collaboration



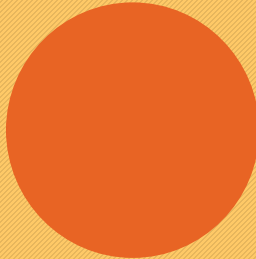
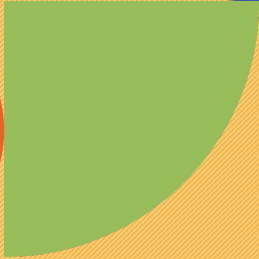
- [Homeless Liaison Directory](#)
- [Head Start-Find a Program Near You](#)
- 4K and 4k Community Programs
- Early Learning Programs

The McKinney-Vento Act specifies the duties of liaisons¹³, as follows from 42 U.S.C. §11432(g)(6)(A):



...

- ensure that families, children, and youth have access to and receive educational services for which they are eligible, including Head Start, early intervention, and other public preschool programs, and referrals to services for health care, dental, mental health, substance use, housing and other appropriate services
- inform parents and guardians of the educational and related opportunities available to their children and provide them with meaningful opportunities to participate in that education



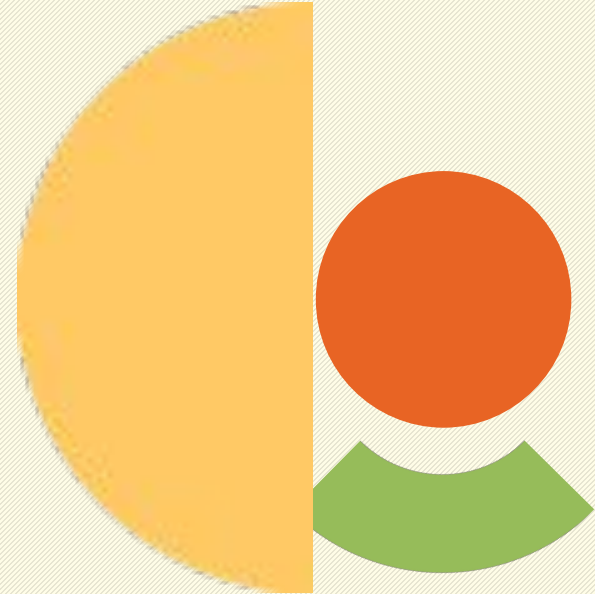
Source: [THE MOST FREQUENTLY ASKED QUESTIONS ON THE EDUCATION RIGHTS OF CHILDREN AND YOUTH IN HOMELESS SITUATIONS](#)

slido



Let's Get a Gage on Our Wisconsin Communities.

Community Collaboration Highlights



ARP-HCY Funds and Families



[The US Department of Education] has reinforced that wraparound services provided through ARP-HCY funds must be focused on students who meet the McKinney-Vento Act's definition of homeless and do not include services that only benefit parents. Parents and other family/household members can incidentally benefit...



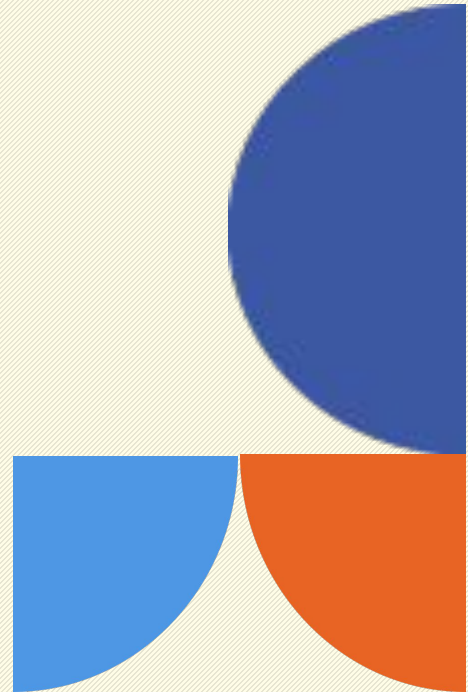
-National Center for Homeless Education's [Providing Wraparound Services Under the American Rescue Plan Homeless Children and Youth Program](#)

Child Care Resource and Referral Agencies (CCR&R)

CCR&Rs are local agencies that provide a variety of services including:

- Referrals to quality childcare
- Information on local supports to prevent homelessness
- Trainings

[Find My CCR&R](#)



Continuum of Care (COCs)



- Continuum of Care are groups of homelessness providers in specific regions
- COCs are a HUD (US Department of Housing and Urban Development) Program
- COCs have requirements to collaborate with local liaisons and schools
[Find your local COC](#)

Source: [THE MOST FREQUENTLY ASKED QUESTIONS ON THE EDUCATION RIGHTS OF CHILDREN AND YOUTH IN HOMELESS SITUATIONS](#)

Family Resource Centers (FRCs)

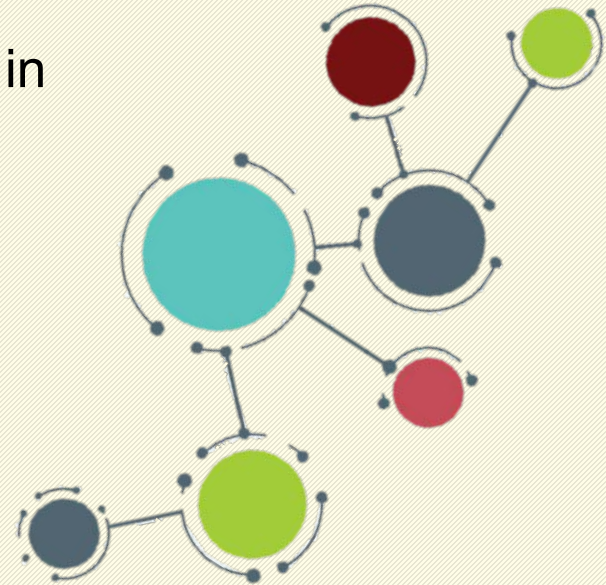


- FRCs support families, parents and children in early childhood years
- Connections for home visiting
- Information on tools and resources for strengthening families

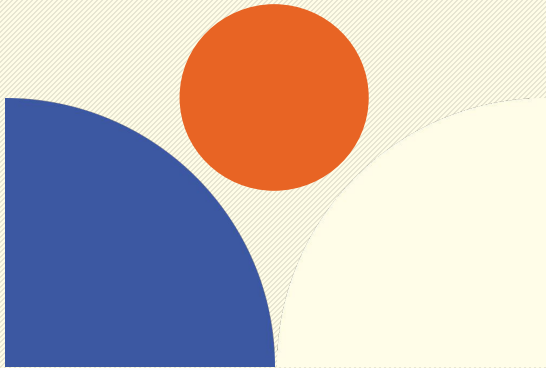
Find your local FRC

[Five For Families](#)

[Supporting Families Together Association](#)



Wisconsin Human Services Agencies



- Community resources
- Mental health referral information
- County specific programs and initiatives

[Find your county](#)

slido



What relationships do you have with districts and communities?

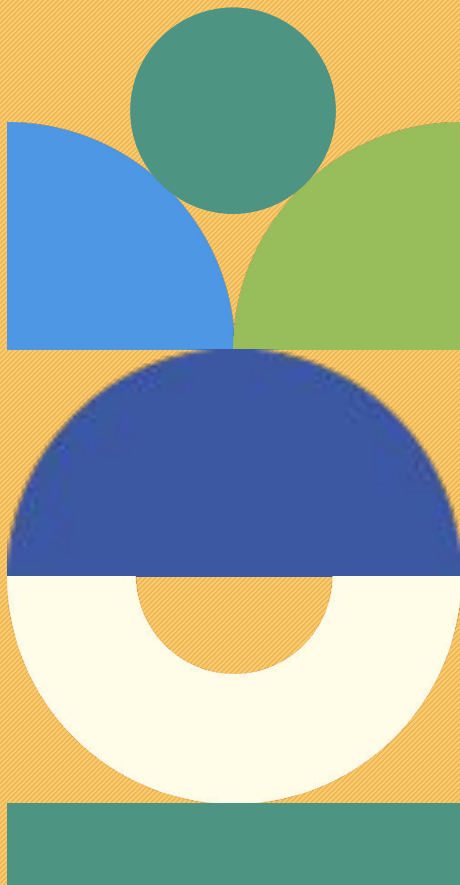
① Start presenting to display the poll results on this slide.

slido



Audience Q&A Session

① Start presenting to display the audience questions on this slide.



Thank you!

Sign up for Wisconsin Early Childhood
Collaborating Partners at

<http://www.collaboratingpartners.com/>.

Contact Maria Kietzman at

kietzmanm@cesa5.org or 608-697-4874.